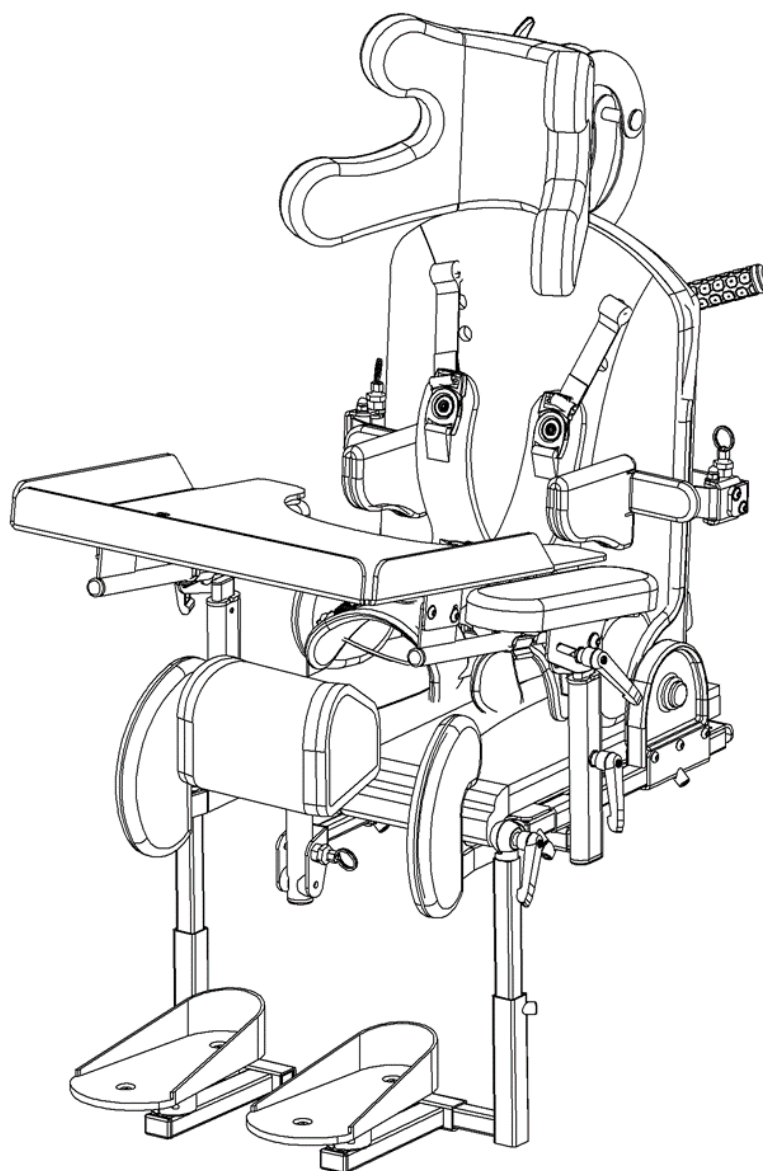




MANUAL FOR

LilISIT - ORTHOPAEDIC SEAT FOR CHILDREN, STABILISING THE BACK AND HEAD



Edition 3 - 26.05.2021



NOTE! THE MANUFACTURER IS SOLELY RESPONSIBLE FOR THE EQUIPMENT PURCHASED FROM A DIRECT REPRESENTATIVE OF LIW CARE TECHNOLOGY OR FROM A SPECIALIZED MEDICAL SHOP REPRESENTING LIW CARE TECHNOLOGY IN POLAND.



NOTE! THE DEVICE IS INTENDED FOR INDOOR USE.



NOTE! THERE IS A DANGER OF ENTRAPMENT OR/ AND COMPRESSION OF THE USERS'S OR THE CARER'S BODY PARTS INSIDE THE GAPS/ SLOTS BETWEEN ELEMENTS DURING USE, SERVICE, INSTALLATION AND ADJUSTING ALL MECHANISMS. THESE ACTIONS SHOULD BE TAKEN WITH EXTRA PRECAUTION. AFTER MAKING ADJUSTMENTS, IT IS NECESSARY TO STABILIZE THE DEVICE POSITION BY RETIGHTENING THE KNOBS/ BOLTS CORRECTLY.



NOTE! THE PRODUCT PACKAGING SHOULD BE RETAINED IN CASE THE PRODUCT NEEDS TO BE TRANSPORTED BACK FOR WARRANTY PURPOSES.



NOTE! DO NOT LEAVE A CHILD IN LILISIT UNSUPERVISED.



NOTE! DO NOT EXCEED MAXIMUM USER WEIGHT FOR LILISIT ORTHOPAEDIC SEAT FOR CHILDREN.



NOTE! DO NOT USE LILISIT ORTHOPAEDIC SEAT FOR CHILDREN IF THERE ARE FAULTY, BROKEN OR MISSING PARTS.



NOTE! IT IS NECESSARY TO READ THE MANUAL BEFORE START-UP.

1	Introduction	4
1.1	Warnings & Safety Information	4
2	Symbol meaning	4
3	Compliance with the safety requirements for medical devices	5
4	Indications for product use	5
5	Weight and dimensions	6
6	Structure of LiliSIT - orthopaedic seat for children, stabilising the back and head	7
7	LiliSIT - orthopaedic seat for children, stabilising the back and head with various base frames	8
8	Mounting the orthopaedic seat using the interchangeable system – aluminium trapezoid	9
9	Mounting the orthopaedic seat using the interchangeable system – polyamide trapezoid.....	10
10	Mounting the orthopaedic seat directly on the base frame	11
10.1	Description of mounting the orthopaedic seat with Outdoor Frame HL21 and Indoor Frame HL21	11
10.2	Description of mounting the orthopaedic seat with XSIT Frame.	12
11	Detailed description of mounting and adjusting LiliSIT - orthopaedic seat for children, stabilising the back and head..	13
11.1	Description of mounting horned headrest.....	13
11.2	Description of adjusting horned headrest.....	14
11.3	Description of adjusting the tilt angle of the backrest	15
11.4	Description of mounting laterals (side supports)	16
11.5	Description of adjusting the laterals (side supports).....	17
11.6	Detailed description of adjusting width of the laterals (side supports)	18
11.7	Description of a quick side supports tilt	18
11.8	Description of adjusting the seat width	19
11.9	Description of fitting the vest.....	20
11.10	Description of vest adjustment	21
11.11	Description of fitting pelvic support belt.....	22
11.12	Description of adjusting the pelvic support belts	23
11.13	Description of adjusting the seat depth	23
11.14	Description of adjusting the seat depth for a patient with asymmetrical leg length	24
11.15	Description of fitting the armrests	25
11.16	Description of adjusting position of the armrest	26
11.17	Description of adjusting height of the armrest	27
11.18	Description of adjusting the angle of the armrest.....	27
11.19	Description of mounting the pommel	28
11.20	Description of a quick swing back pommel	28
11.21	Description of adjusting the pommel.....	29
11.22	Description of fitting the foot supports.....	30
11.23	Description of adjusting the height of the foot supports	31
11.24	Description of adjusting angle of the foot supports	31
11.25	Description of adjusting the distance of the foot supports	32
11.26	Description of adjusting the angle and position of the platforms	33
11.27	Description of mounting knee supports.....	34
11.28	Description of knee support	35
11.29	Description of assembling the rehabilitation tray	36
11.30	Description of adjusting the spacing of the tray handles	36
11.31	Description of adjusting the tray angle	37
11.32	Description of adjusting the lumbar support	37
12	Moving LiliSIT, orthopaedic seat for children, stabilising the back and head	38
13	Cleaning and maintenance	39
	Disinfection	39
14	Service and Maintenance.....	40
15	Identification plate.....	40
	WARRANTY CARD	41

1 Introduction

Thank you for purchasing LiliSIT - orthopaedic seat for children, stabilising the back and head, by LIW Care Technology Care Sp. z o.o. We are certain that the innovative device with advanced anatomical body adjustment features will improve the comfort of work and leisure time for the user in the sitting position.

Developed by LIW Care Technology Sp. z o.o., the LiliSIT - orthopaedic seat for children stabilising the back and head has been designed to provide an alternative to standard orthopaedic seats with limited anatomical adjustment ranges and bespoke seats which perfectly map out the body curvatures, however, they do not give the opportunity to correct the user's body posture.

We ensured that the seat is as simple to use as possible while giving the opportunity to fit the anatomical shape of the user, as well as correct the posture.

1.1 Warnings & Safety Information

For LIW Care Technology Sp. z o. o., the most important thing is to protect the patients who use our equipment. To ensure the safety of LiliSIT users, the following recommendations should be adopted:

1. Please read the instructions before first use. If any questions or doubts should arise, please contact your dealer or the manufacturer.
2. Please make sure that all information, tips and warnings included in these chapters are well understood.

In these instructions for LIW Care Technology Sp. z o. o. products, you will find information marked with the "NOTE!" symbol.
It is used to draw the reader's particular attention to the text. It looks as follows:



NOTE! THE SYMBOL IS USED TO DRAW THE READER'S ATTENTION TO THE TEXT WHICH IS MARKED WITH THIS SYMBOL. FAILURE TO COMPLY WITH THE INSTRUCTIONS MAY ENDANGER THE HEALTH AND SAFETY OF THE USER OR CAUSE DAMAGE THE PRODUCT.

2 Symbol meaning

	Manufacturer's name
	Date of manufacture
	Serial Number
	Maximum user weight
	Avoid contact with water
	Note! Follow product instructions
	Unlocking direction
	Movement direction
	Mark of conformity according to the Regulation 2017/745 of the European Parliament and of the Council (EU) dated from April 5 th , 2017 on medical devices, Annex V.
	Medical device

3 Compliance with the safety requirements for medical devices

Hereby we confirm that the LiliSIT meets requirements of the Regulation of the European Parliament and of the Council (EU) 2017/745 dated from April 5th, 2017 on medical devices.

The LiliSIT in accordance with Annex VIII of the Regulation of the European Parliament and of the Council (EU) 2017/745 dated from April 5th, 2017 on medical devices is a non-invasive, active class I medical device according to the rule 1.

Declaration of Conformity for this product is available from the manufacturer's Sales Department.



NOTE! IF PRODUCT HAS BEEN MODIFIED USING NON - AUTHENTIC PARTS OR PARTS PRODUCED BY ANOTHER MANUFACTURER, REMOVE THE CE MARK.

4 Indications for product use

LiliSIT - orthopaedic seat, stabilising the back and head is designed for children suffering from paralysis and triplegia or tetraplegia; with diplegia, hemiplegia or hemiparesis.

It is recommended for children who have been diagnosed with:

- cerebral palsy (paralysis cerebri infantum),
- muscular dystrophies,
- paralysis,
- spina bifida,
- myelomeningocele,
- spinal injury,
- traumatic brain injury,
- strokes,
- other medical conditions with paresis, paralysis, locomotor disabilities enabling their self-sufficient movement.

5 Weight and dimensions

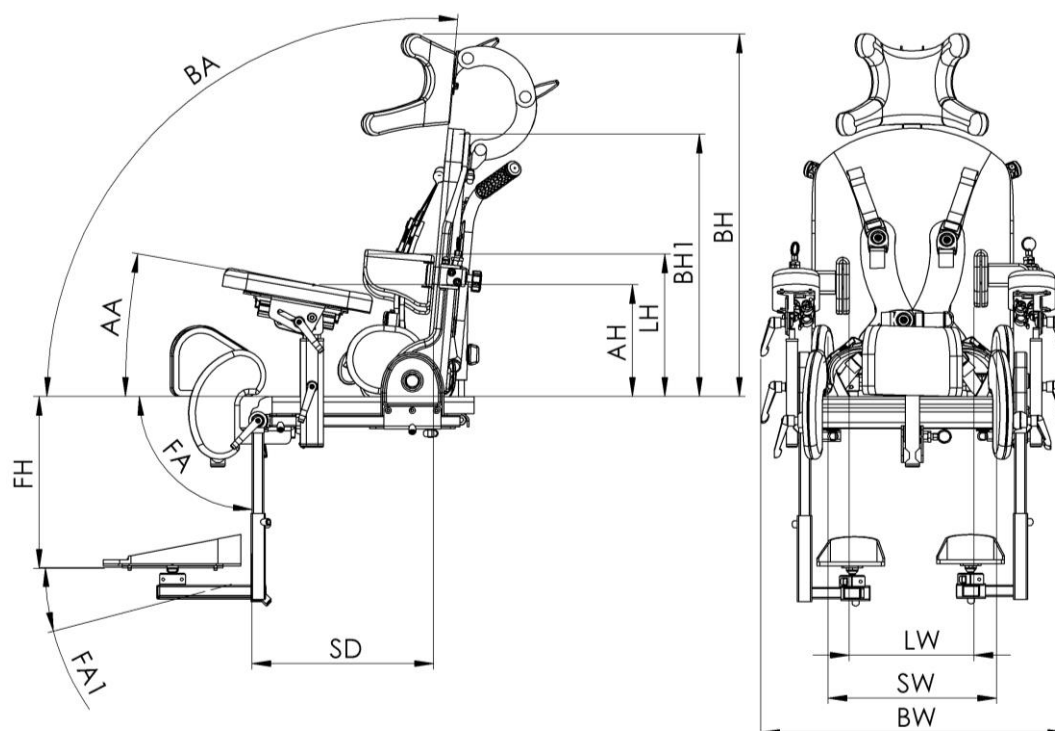


Fig. 1

No.	Dimension	Dimension symbol	Dimension [cm]		
			S	M	L
1	Seat depth	SD	15÷26	18÷31	18÷40
2	Backrest height without headrest	BH1	40	47	58
3	Backrest height with headrest	BH	61	68	78
4	Laterals height	AH	15÷22	15÷22	15÷22
5	Chest supports length	LH	14,5÷32	14,5÷32	14,5÷40
6	Footrests height	FH	17÷30	17÷30	17÷38
7	Seat width	SW	14÷30	18÷30	18÷32
8	Laterals width (side supports)	LW	12,5÷28	12,5÷28	12,5÷28
9	Base width	BW	53	53	53
10	Footrest assembly angle	FA1	-/+5°	-/+5°	-/+5°
11	Footrest angle adjustment	FA	0°÷90°	0°÷90°	0°÷90°
12	Armrest angle adjustment	AA	-8°÷10°	-8°÷10°	-8°÷10°
13	Backrest angle adjustment	BA	-5°÷25°	-5°÷25°	-5°÷25°
14	Maximum user's weight		60kg	60kg	60kg
15	Basic seat weight		15kg	15kg	16kg
16	Seat and XSit Frame weight		33kg	33kg	34kg
17	Seat and Outdoor Frame HL21 weight		39,5kg	39,5kg	41,5kg
18	Seat and Indoor Frame HL21 weight		35,8kg	35,8kg	36,8kg

6 Structure of LiliSIT - orthopaedic seat for children, stabilising the back and head

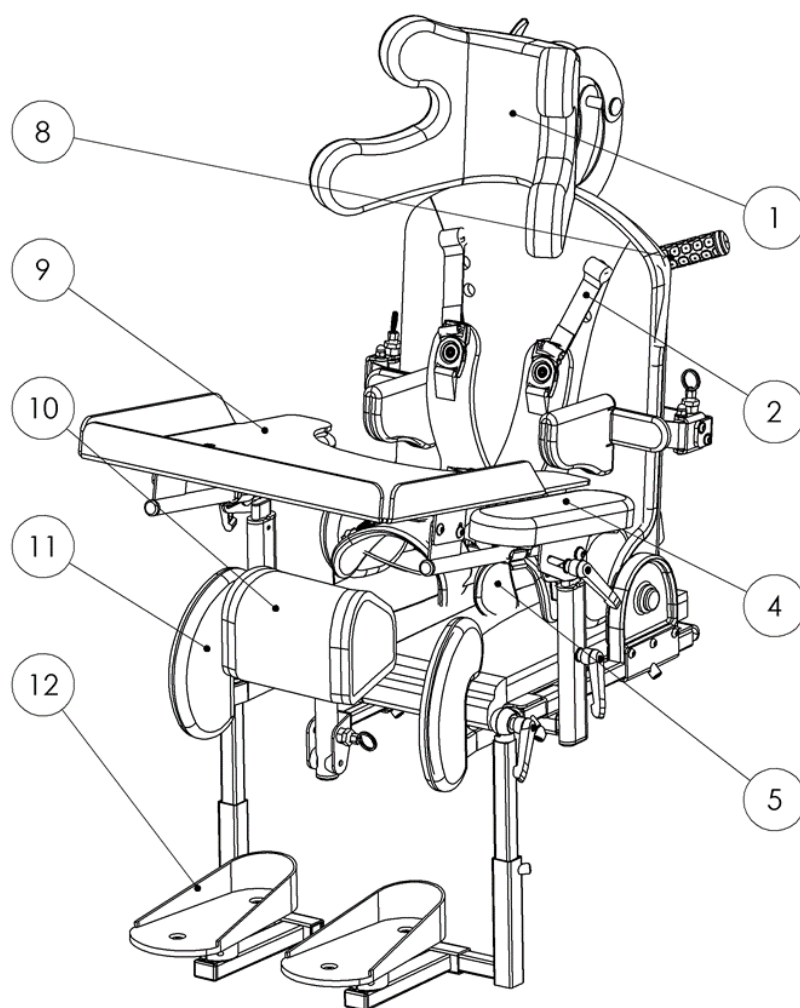


Fig. 2

- 1) Horned headrest*
- 2) Vest*
- 3) Side support
- 4) Armrest
- 5) Pelvic belts
- 6) Seat
- 7) Backrest with lumbar support system
- 8) Push handle
- 9) Rehabilitation tray *
- 10) Pommel*
- 11) Knee blocks*
- 12) Foot platform with 3d adjustment system*

* Accessory marked with an asterisk is optional.

7 LiliSIT - orthopaedic seat for children, stabilising the back and head with various base frames

LiliSIT - orthopaedic seat for children, stabilising the back and head can be mounted on various base frames by using an interchangeable system or directly on the frame without the interchangeable system.

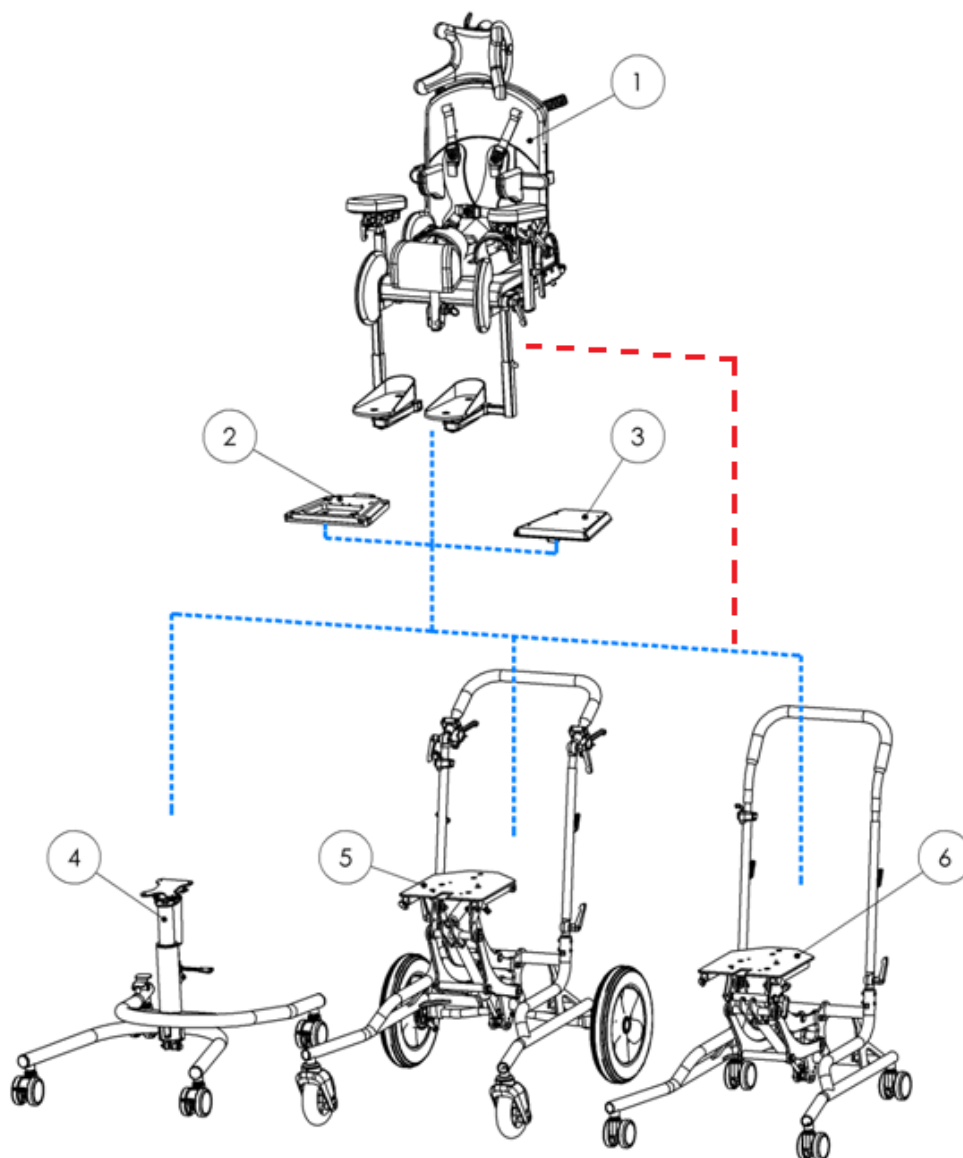


Fig. 3

- 1) LiliSIT - orthopaedic seat for children stabilizing the back and head
- 2) Interchangeable system – aluminium trapezoid*
- 3) Interchangeable system - polyamide trapezoid*
- 4) XSIT Frame* (user manual provided separately with accessories)
- 5) Outdoor Frame HL21 * (user manual provided separately with accessories)
- 6) Indoor Frame HL21 * (user manual provided separately with accessories)

* Accessory marked with an asterisk is optional.

8 Mounting the orthopaedic seat using the interchangeable system – aluminium trapezoid

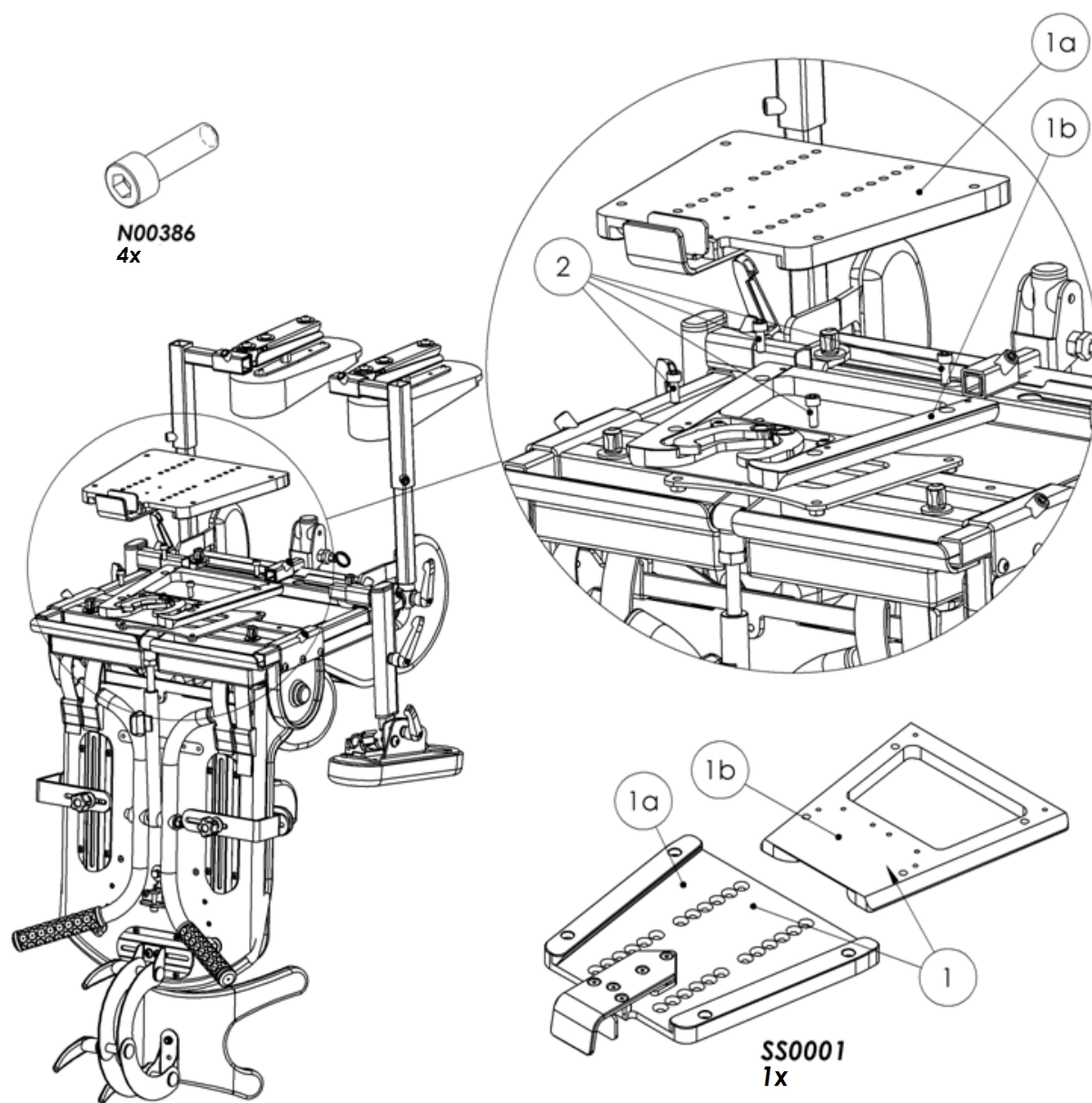


Fig. 4

To mount the orthopaedic seat, tighten part 1b with four screws (2) using a 5 mm Allen key. Sockets of the screws are located underneath the seat.

9 Mounting the orthopaedic seat using the interchangeable system – polyamide trapezoid

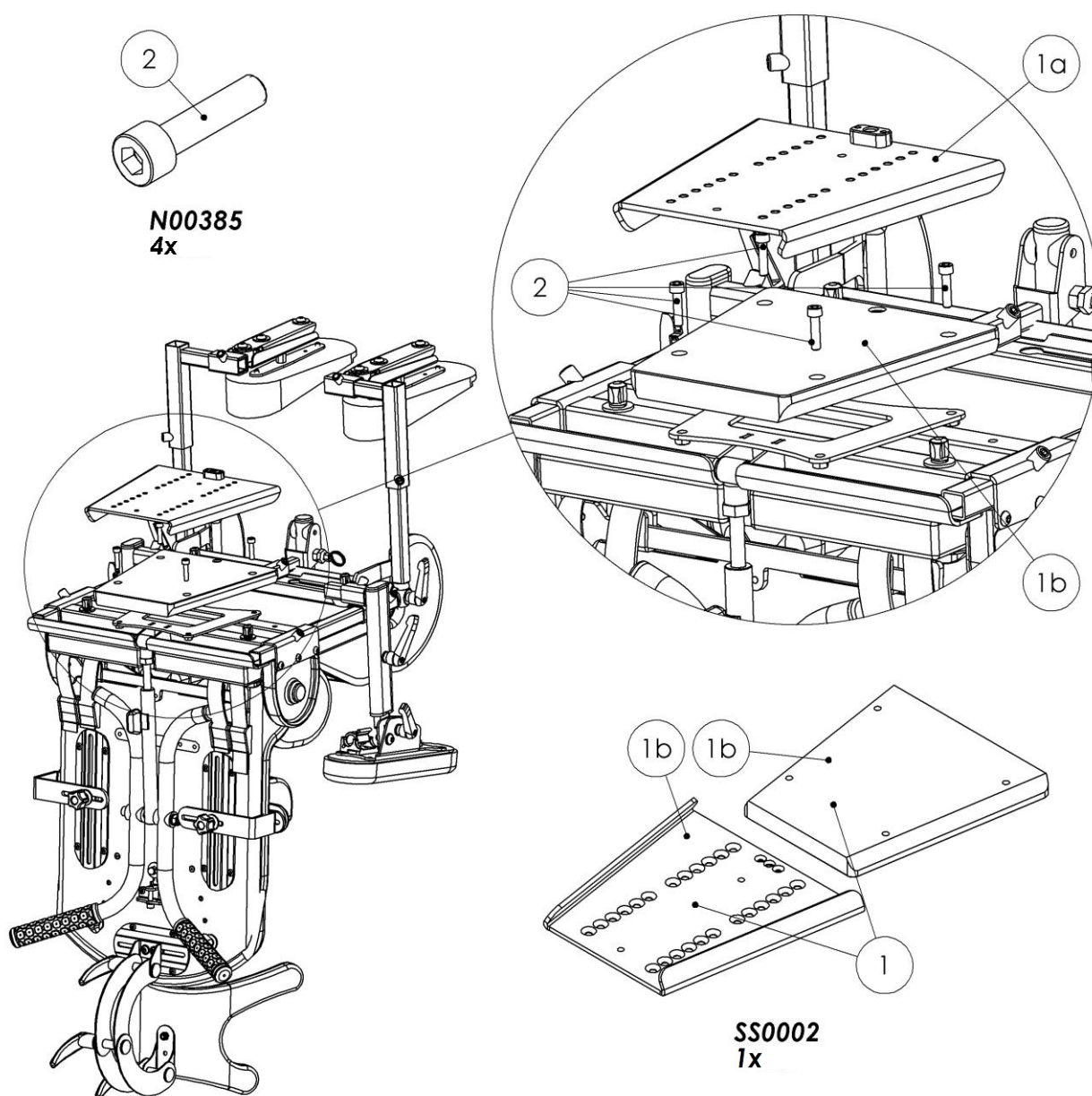


Fig. 5

To mount the orthopaedic seat, tighten part 1b with four screws (2) using a 5 mm Allen key. Sockets of the screws are located underneath the seat.

10 Mounting the orthopaedic seat directly on the base frame

10.1 Description of mounting the orthopaedic seat with Outdoor Frame HL21 and Indoor Frame HL21

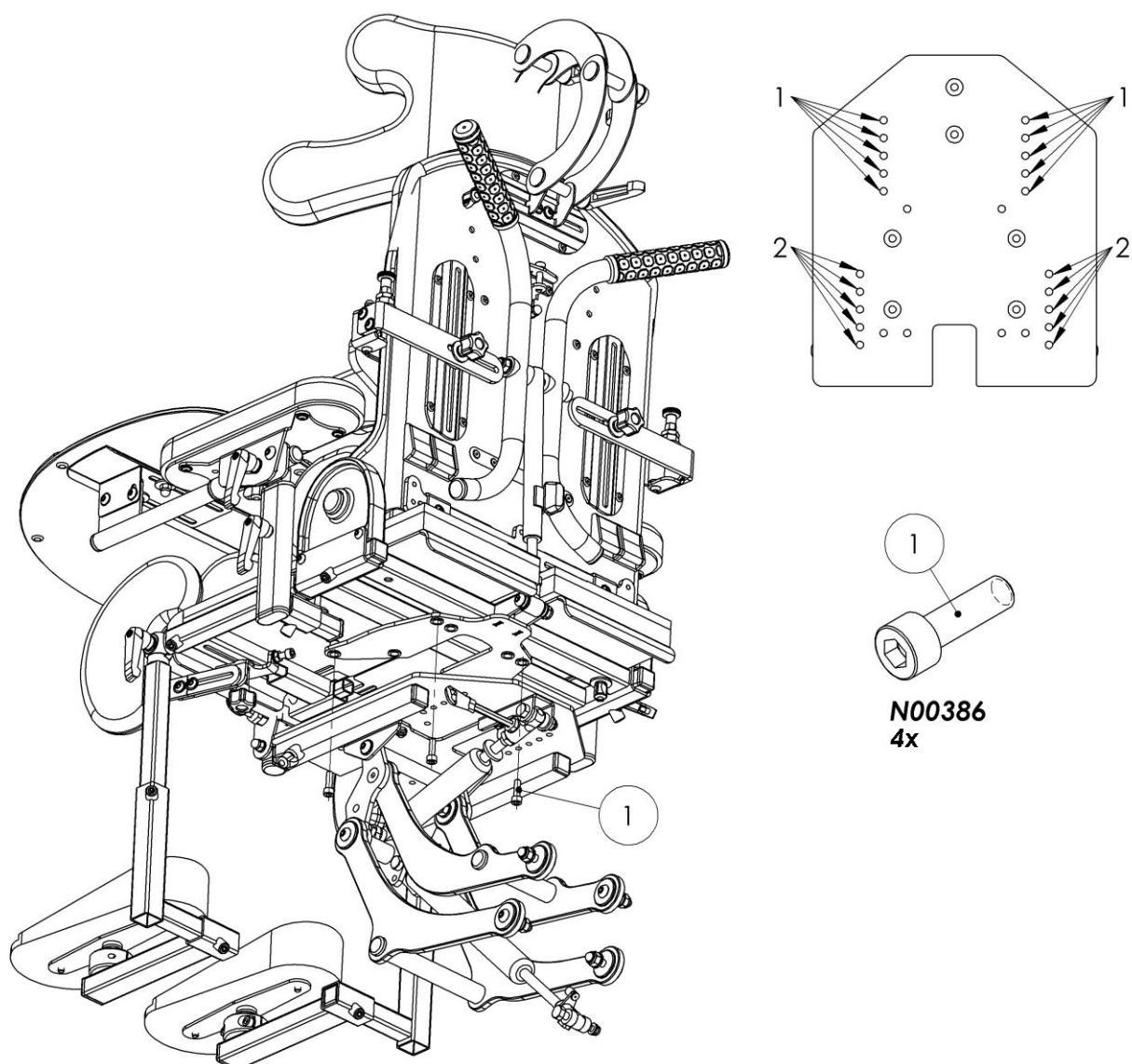


Fig. 6

Mount the seat using 4 screws (1) by inserting them through a pair of slots 1 and 2. When mounting the seat pay special attention to the position of the seat on the frame. It is recommended that a seat with a maximum depth to be fitted as far back as possible; and with a short depth, closer to the front in relation to the base frame.

10.2 Description of mounting the orthopaedic seat with XSIT Frame.

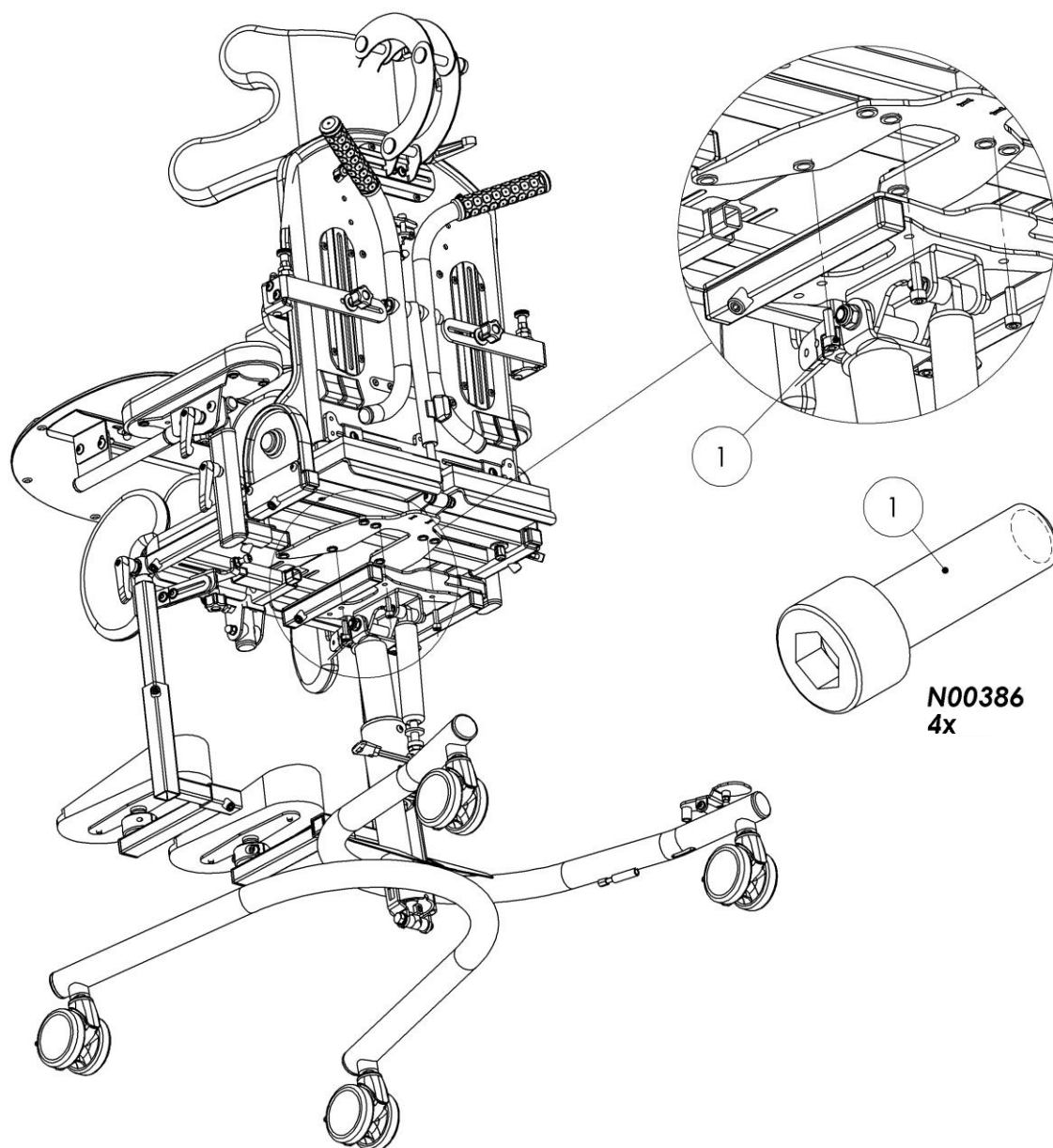


Fig. 7

Mount the seat by inserting 4 screws (1) through the pair of slots 1 and 2. When mounting the seat, pay special attention to the position of the seat on the frame.

11 Detailed description of mounting and adjusting LiliSIT - orthopaedic seat for children, stabilising the back and head

11.1 Description of mounting horned headrest.

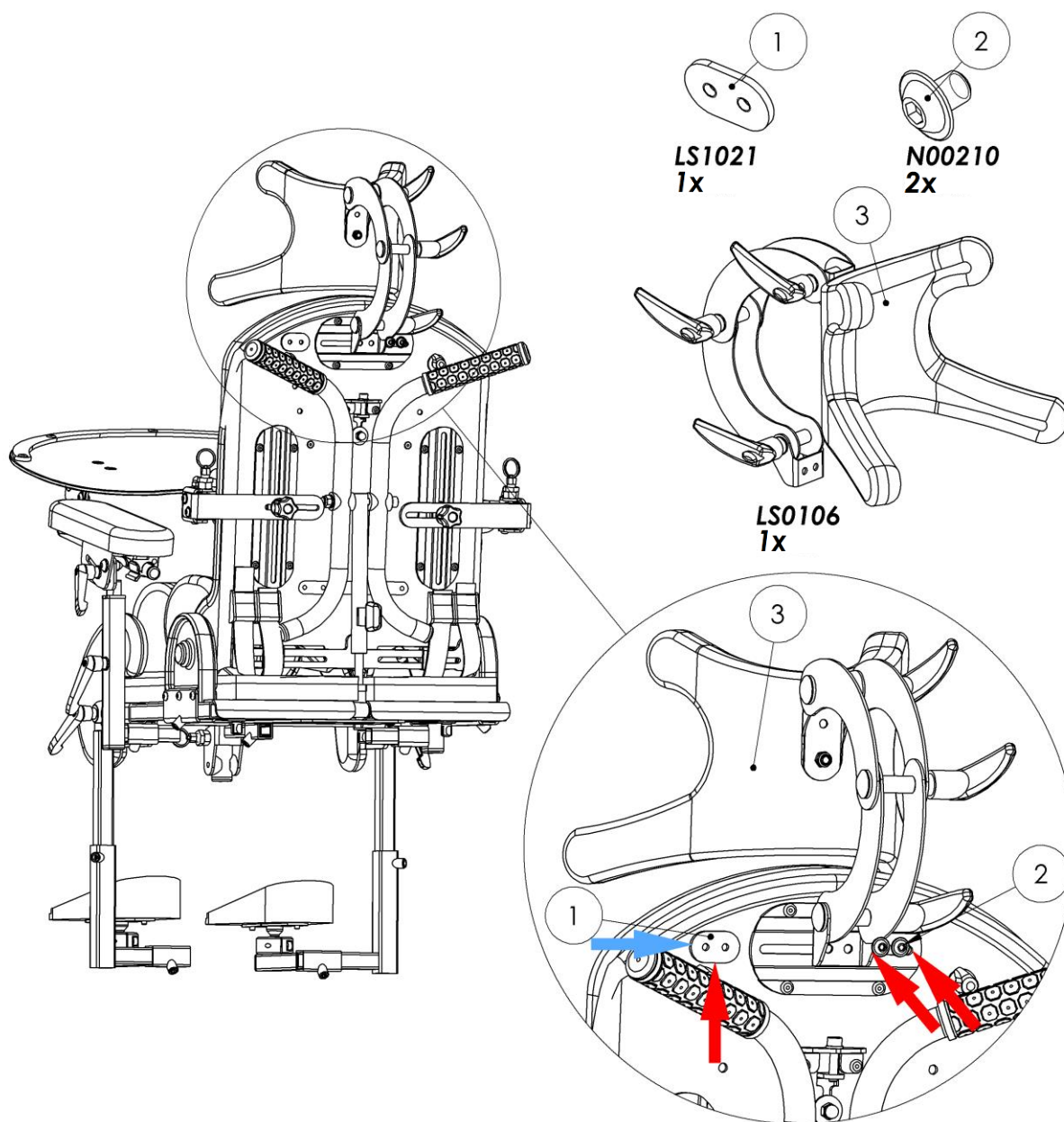


Fig. 8

To mount the horned headrest, insert piece 1 in to the gap at the back of the backrest. Next, place the horned headrest in such a way that the mounting slots of piece 1 are aligned with slots of piece 3. Fix the headrest with screws 2 and retighten them using a 4 mm Allen key.

11.2 Description of adjusting horned headrest

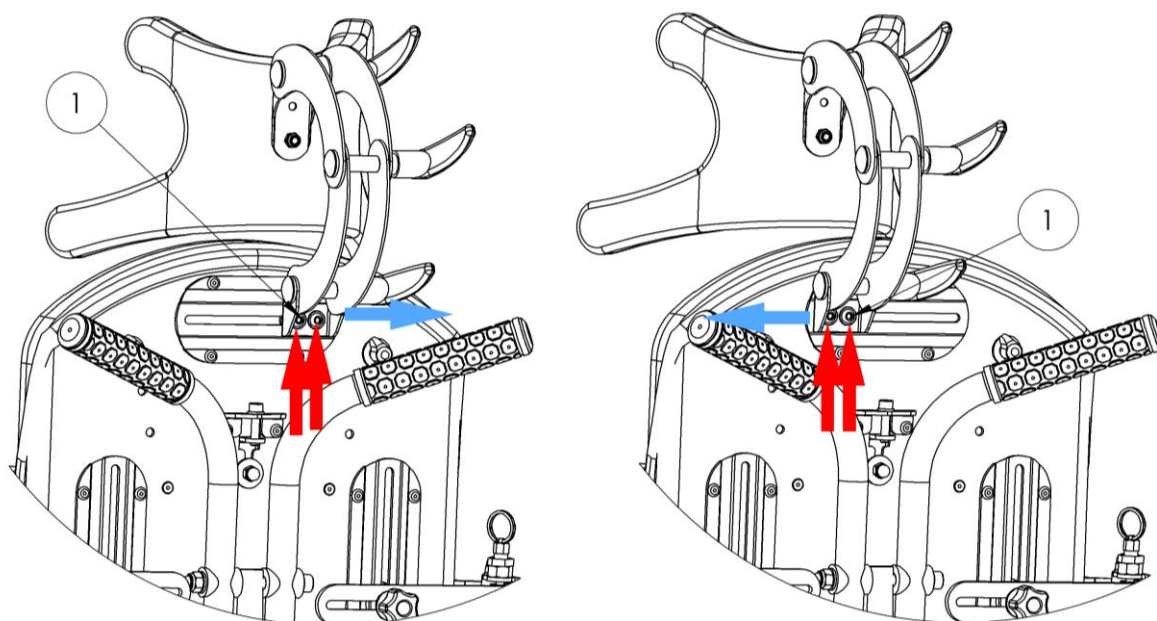


Fig. 9

To move the headrest off centre the seat axis, loosen screws 1, then slide the headrest right or left, depending on the user's needs. Once required position has been achieved, fix the headrest with screws 1 using a 4 mm Allen key.

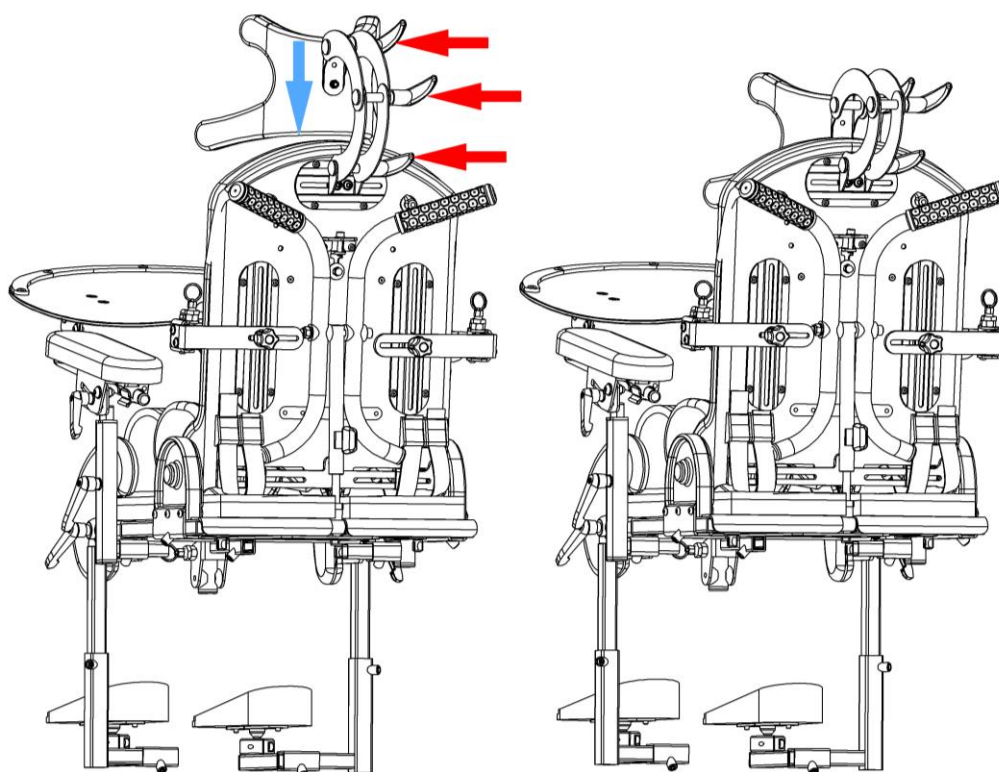


Fig. 10

The horned headrest can be height adjusted. To change its height, loosen levers marked with the red arrow, set the headrest at the required height and retighten the levers.

11.3 Description of adjusting the tilt angle of the backrest

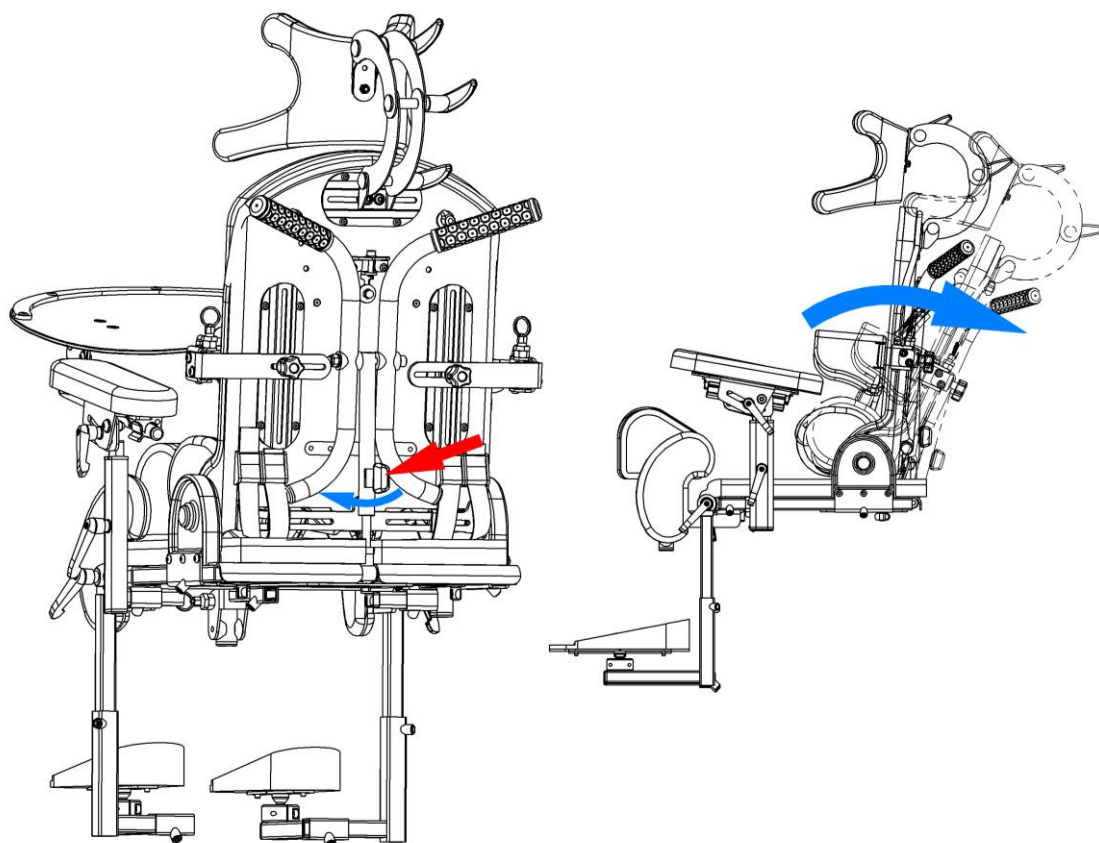


Fig. 11

The backrest tilt angle can be adjusted. The angle range, in relation to the axis is between -5° and 25° . Angle is adjusted by releasing the retardant lever marked with the red arrow in the direction shown in the picture above.



NOTE! CAUTION SHOULD BE TAKEN WHEN ADJUSTING THE TILT ANGLE OF THE BACKREST WITH THE USER IN THE ORTHOPAEDIC SEAT. WHEN THE ADJUSTMENT LEVER IS TURNED, THE TILT ANGLE CAN CHANGE UNCONTROLLABLY AND THERE IS A RISK THAT THE BACKREST LEVER MAY HIT THE PERSON OPERATING THE EQUIPMENT. THEREFORE, WHILE MAKING ADJUSTMENTS, HOLD THE BACKREST WITH ONE HAND, IDEALLY BY THE BACKREST HANDLE.

11.4 Description of mounting laterals (side supports)

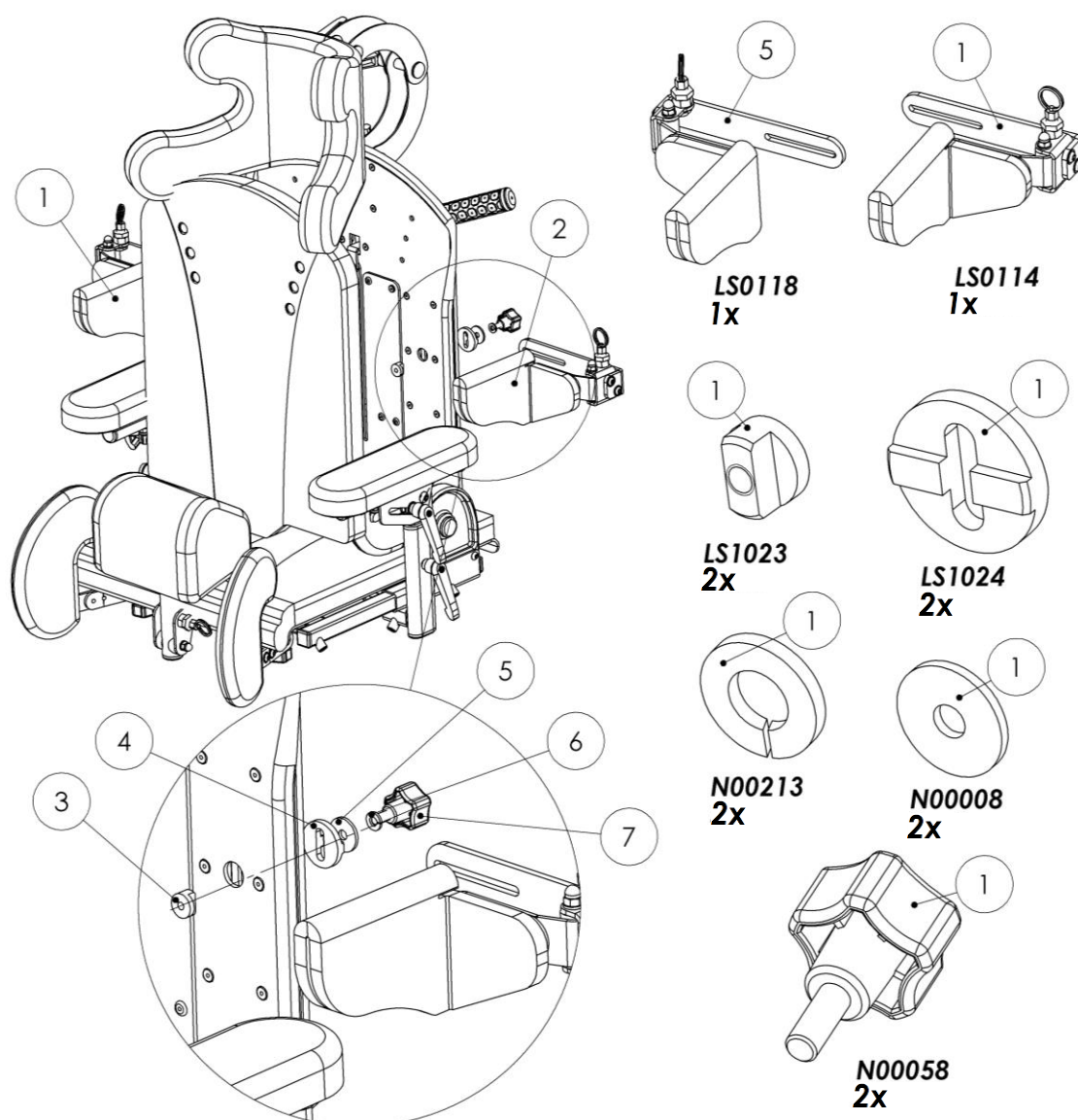


Fig. 12

When mounting the laterals, it is best to begin with removing the cover from the backrest. The cover is fixed with strong Velcro tapes. Therefore, “pull” the cover off, starting from the top. After removing the cover, there are two slots visible in the aluminium backrest. Thread part 1 through the slots. Part 1 will be inserted in to the gap at the back of the backrest. Next, at the back of the backrest, put part 2 and 4 and 3 on part 1 in the following order: part 2, part 4, part 3. Lastly, screw the lateral in using knob 5. Repeat the actions for the other lateral.

11.5 Description of adjusting the laterals (side supports)

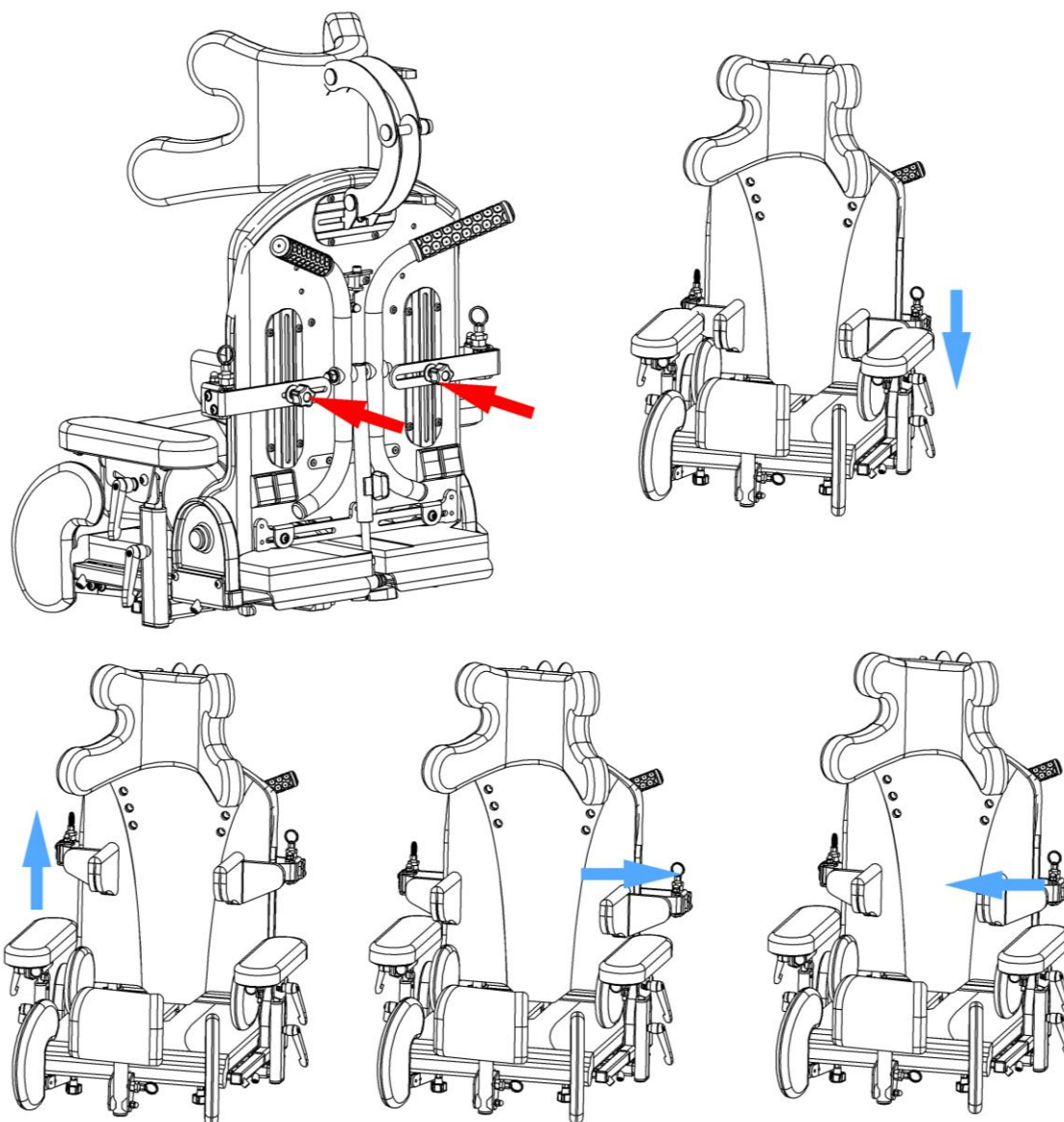


Fig. 13

The laterals can be height and width adjusted. To adjust, loosen knob marked with the red arrow. Adjust the height and width.



NOTE! ADJUSTING THE LATERALS SHOULD BE MADE BY AN OCCUPATIONAL THERAPIST, A PHYSIOTHERAPIST OR A DOCTOR. INCORRECT SIDE SUPPORT MAY CAUSE SCOLIOSIS.

11.6 Detailed description of adjusting width of the laterals (side supports)

In case a patient requires a non-standard adjustment of the side supports, there is a way to extend the range of adjustment.

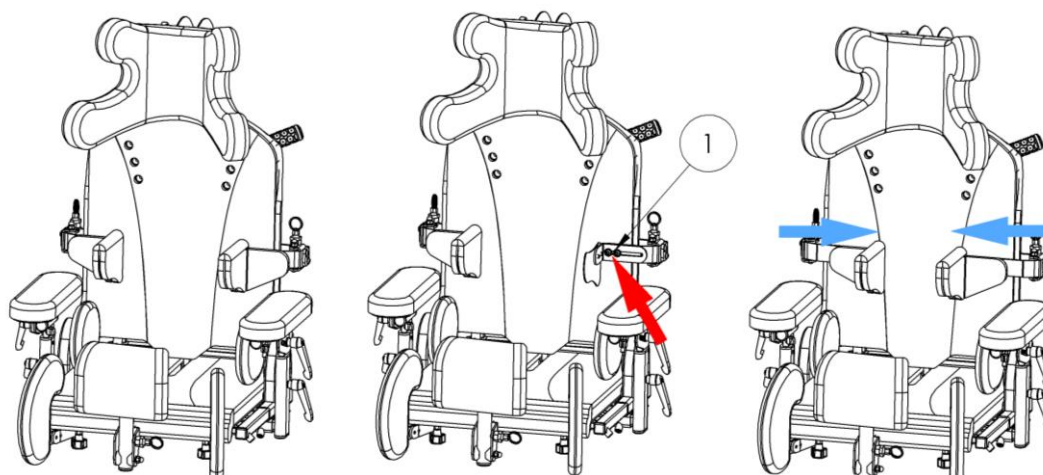


Fig. 14

Pull away the cover from the lateral. Loosen up screws 1 using a 4 mm Allen key. Adjust the width of the lateral. Once the required position has been achieved, tighten screws 1.

11.7 Description of a quick side supports tilt

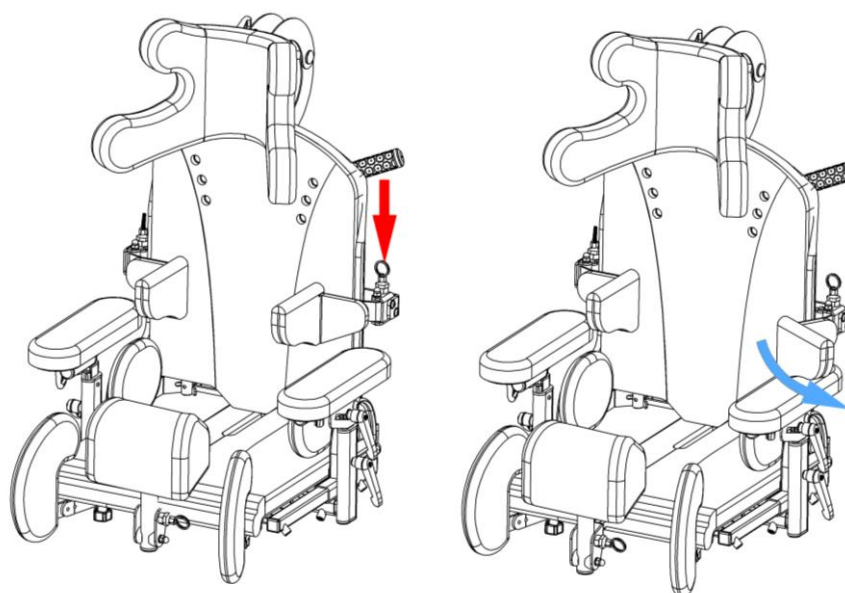


Fig. 15

To place a patient in a comfortable position in the seat, there is a possibility to quickly swing away the side supports. To tilt the side supports back, pull up the side supports lock marked with the red arrow and then swing away the side support as in Fig. 15.

To close the side supports again, turn the side supports to the initial position to lock it.

11.8 Description of adjusting the seat width

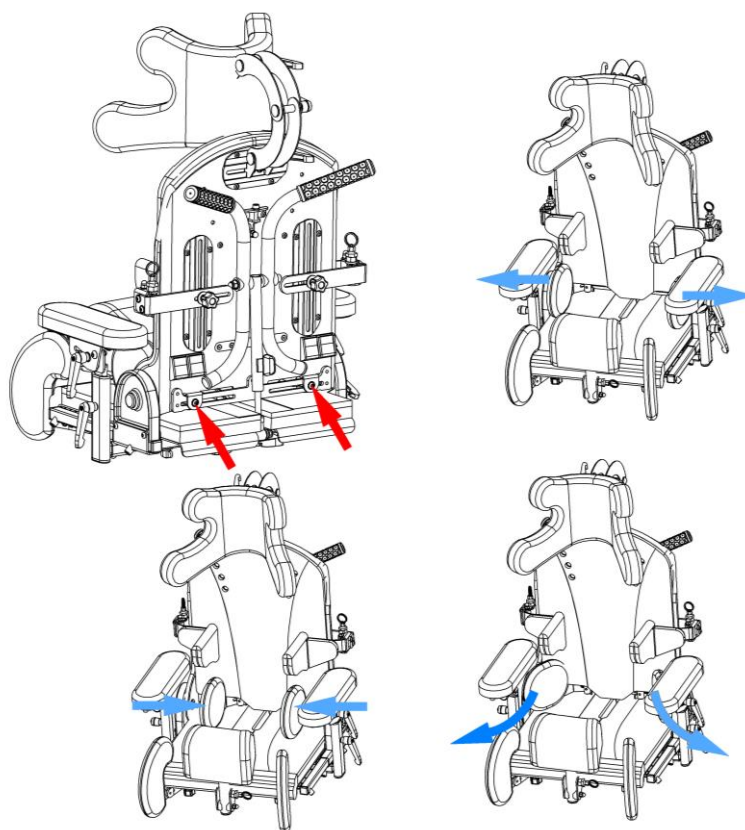


Fig. 16

Loosen up screws marked with the red arrows using a 4 mm Allen key. Set the required seat width. Retighten the mounting screws.

11.9 Description of fitting the vest

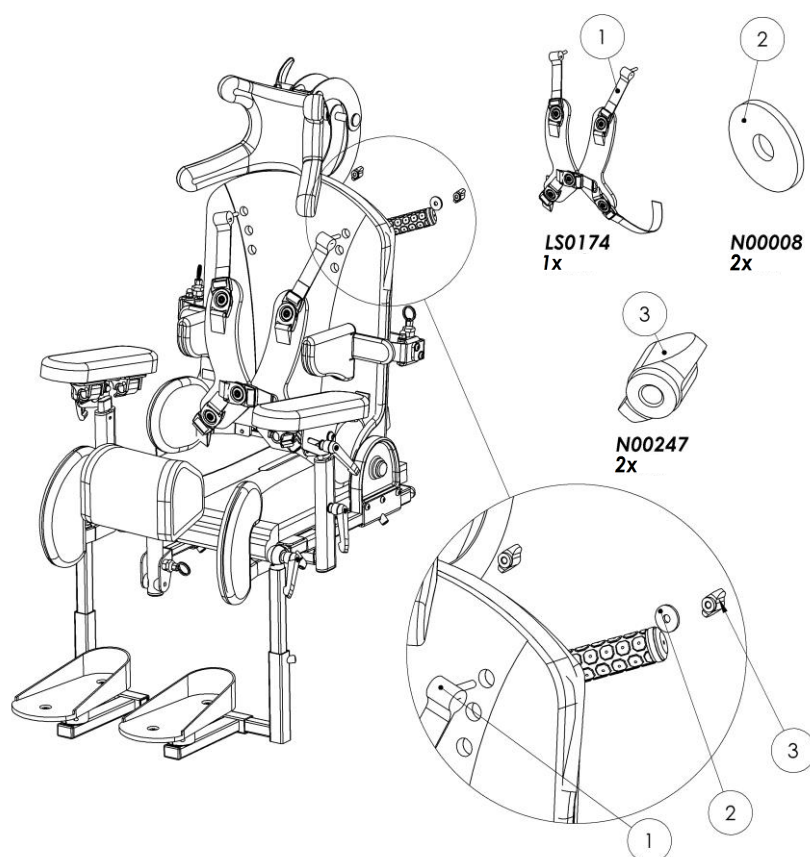


Fig. 17

To fit the vest, thread both ends of the strap with the screw through the slots in the upholstery and the aluminium backrest. After threading the straps, put the metal washer on the fixing screw and tighten with knob 3. There are 3 slots of different heights in the backrest upholstery available, depending on the patient's height.

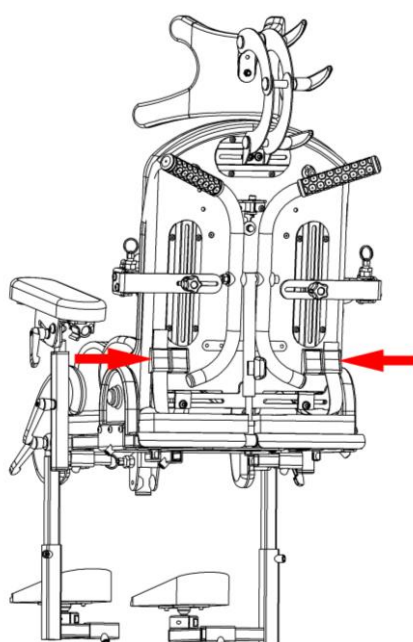


Fig. 18

Fit the two remaining straps in the outer buckles located at the back of the backrest marked in the picture with the red arrows.

11.10 Description of vest adjustment

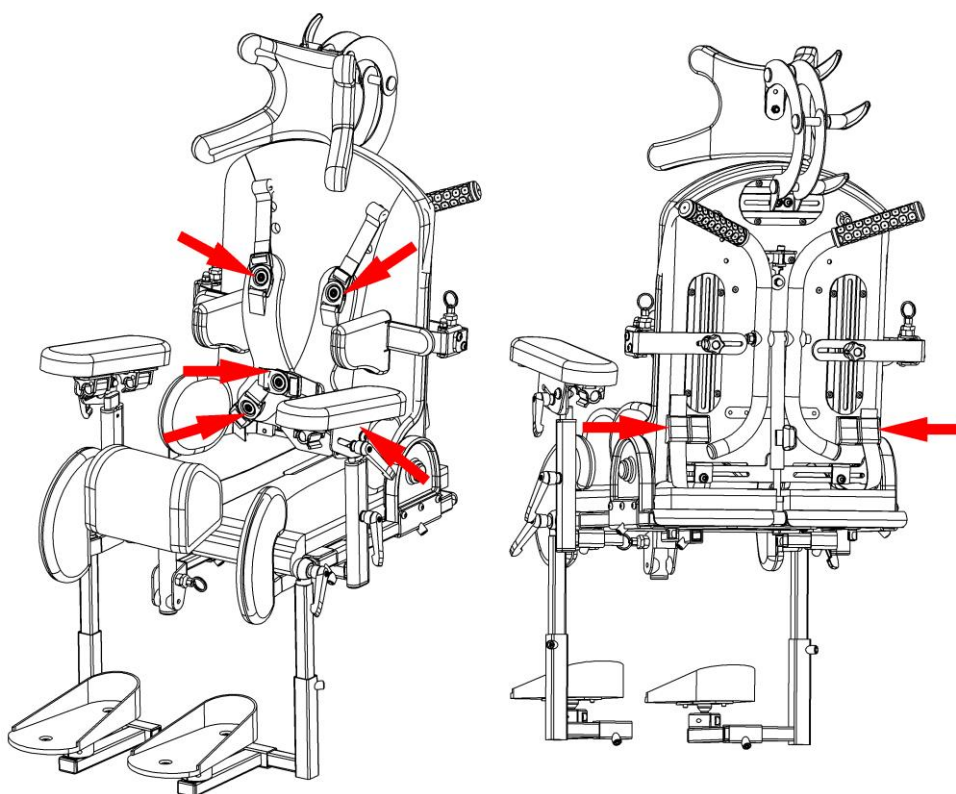


Fig. 19

The vest has 7 points in total which allow adjusting the length of the fitting straps. All these points are marked in the picture with the red arrow.

11.11 Description of fitting pelvic support belt

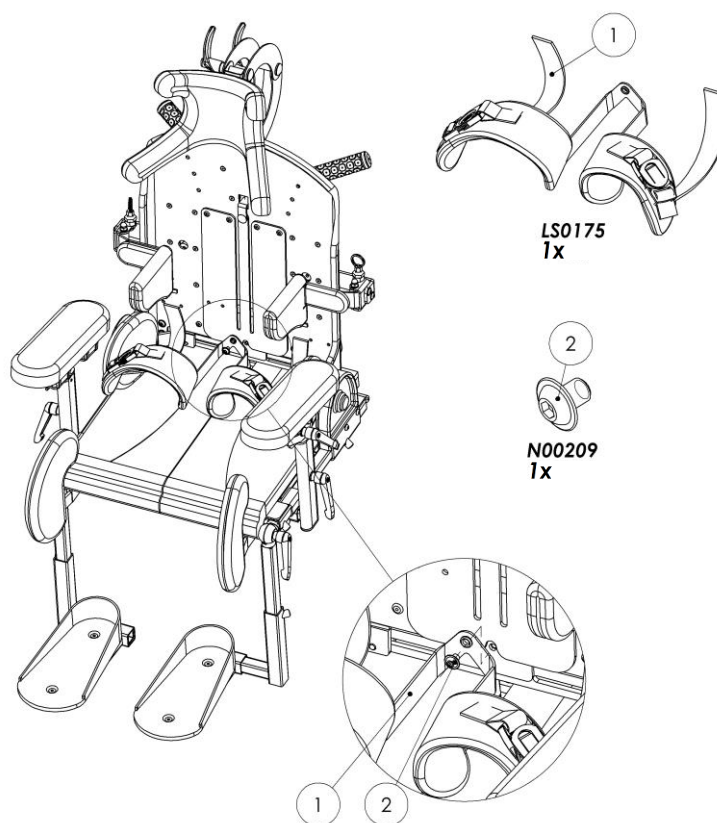


Fig. 20

Start fitting the pelvic support belts by removing the cover from the backrest. The cover is fixed with strong Velcro tapes. It needs to be therefore “pulled away” from the back starting from the top. After removing the cover, at the bottom of the backrest, there is a bolt 2 which needs to be unscrewed. Dismounted bolt will be used to fit the belt then tightened with a 4mm Allen key and replace the cover back. Thread the two remaining straps through buckles fixed at the bottom part of the backrest. The buckles are marked in the picture with two arrows.

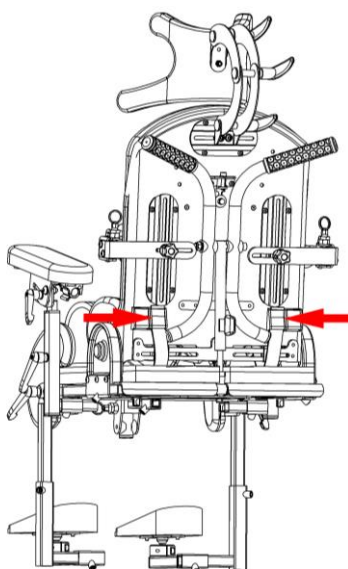


Fig. 21

11.12 Description of adjusting the pelvic support belts

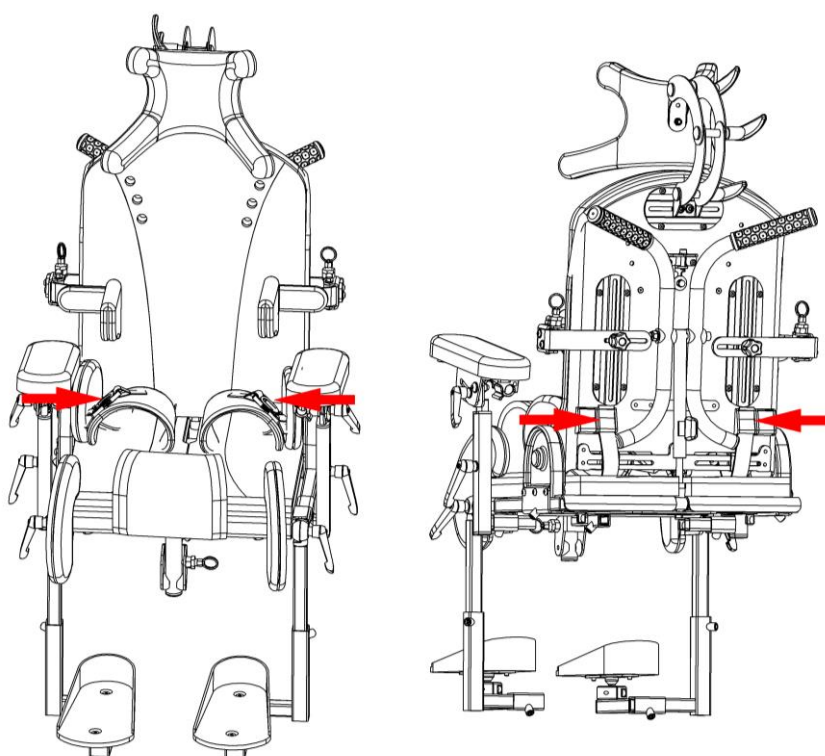


Fig. 22

Pelvic support belts are length adjustable by using 4 straps, which are marked with red arrows in the picture above.

11.13 Description of adjusting the seat depth

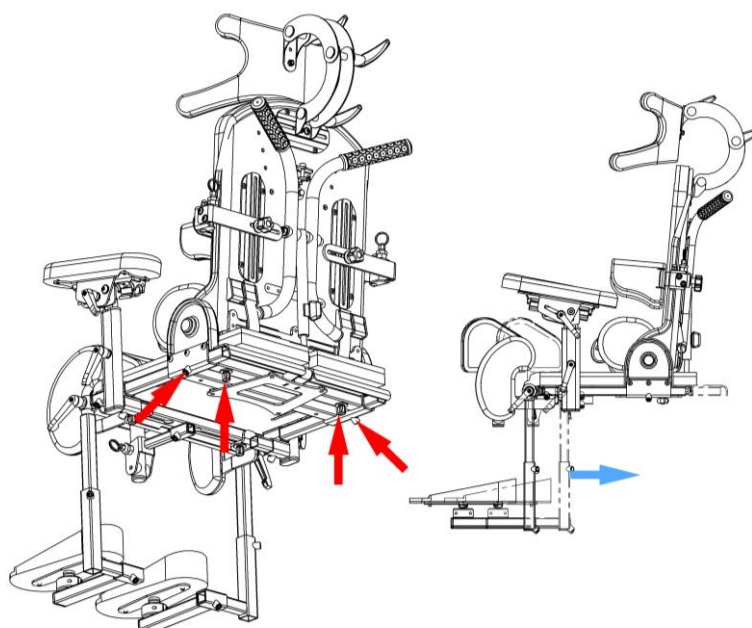


Fig. 23

To adjust the seat depth, loosen the screws and knobs marked with red arrows. Next, slide the seat with the footrest in to the required position. After making the adjustment, retighten the screws and knobs.

11.14 Description of adjusting the seat depth for a patient with asymmetrical leg length

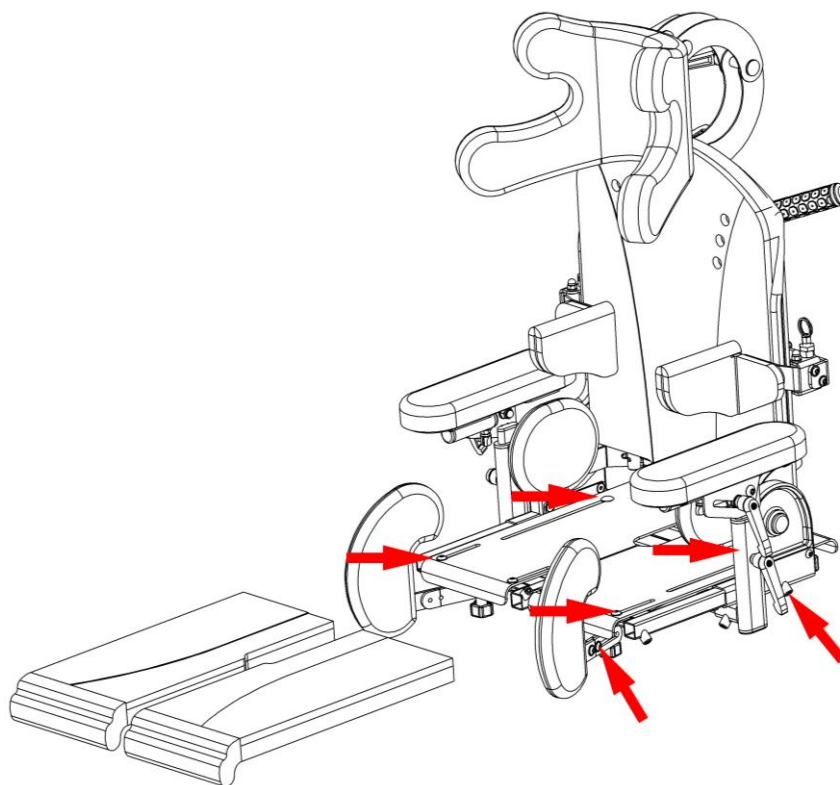


Fig. 24

To adjust the seat depth for a patient with asymmetrical leg length, remove the seat cover. After removing the cover, untighten 8 screws marked with red arrows and move the seat plate forward. After making the adjustment, retighten the screws and knobs and put the cover back on.

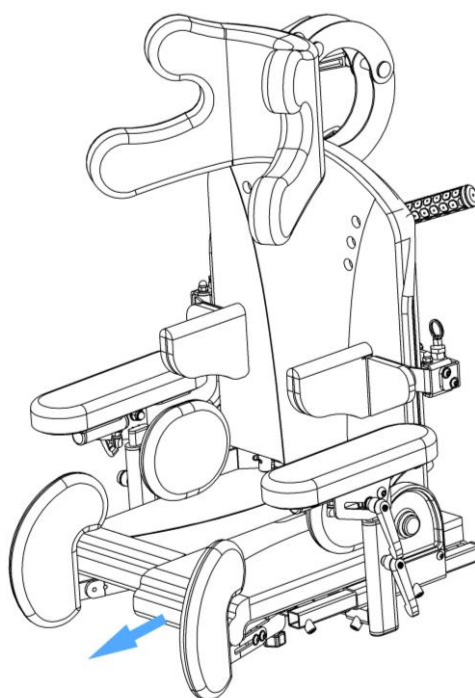


Fig. 25

11.15 Description of fitting the armrests

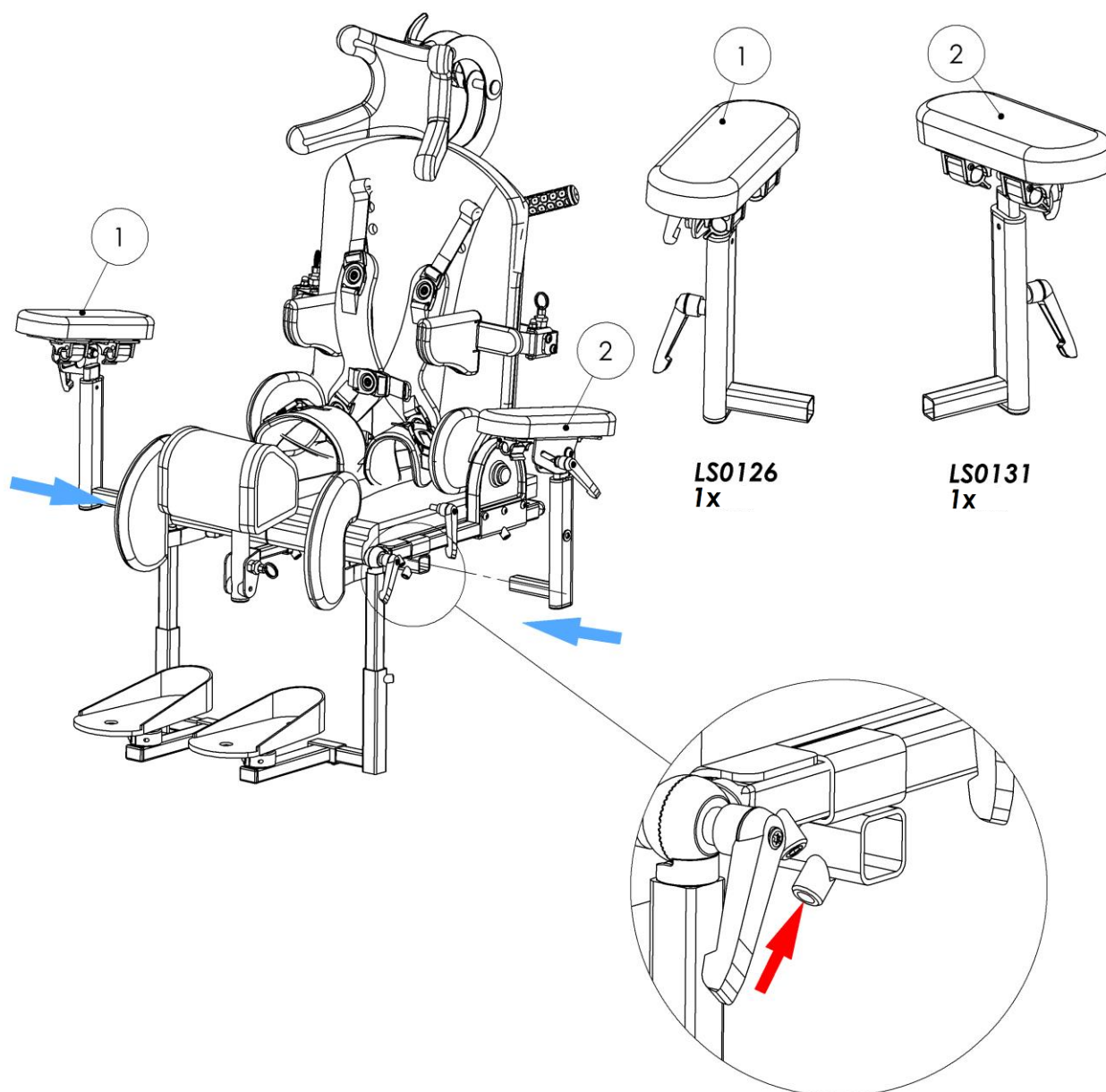


Fig. 26

Lilisit - orthopaedic seat for children, stabilising the back and head is packaged without the armrests attached. It is due to its safety during transport. The armrests, therefore, need to be additionally installed. There are two slots on either side of the seat unit where the armrests need to be inserted into Fig. 26. After inserting the armrests in to the sockets, fix them into place with a bolt marked with the red arrow using a 4mm Allen key.

11.16 Description of adjusting position of the armrest

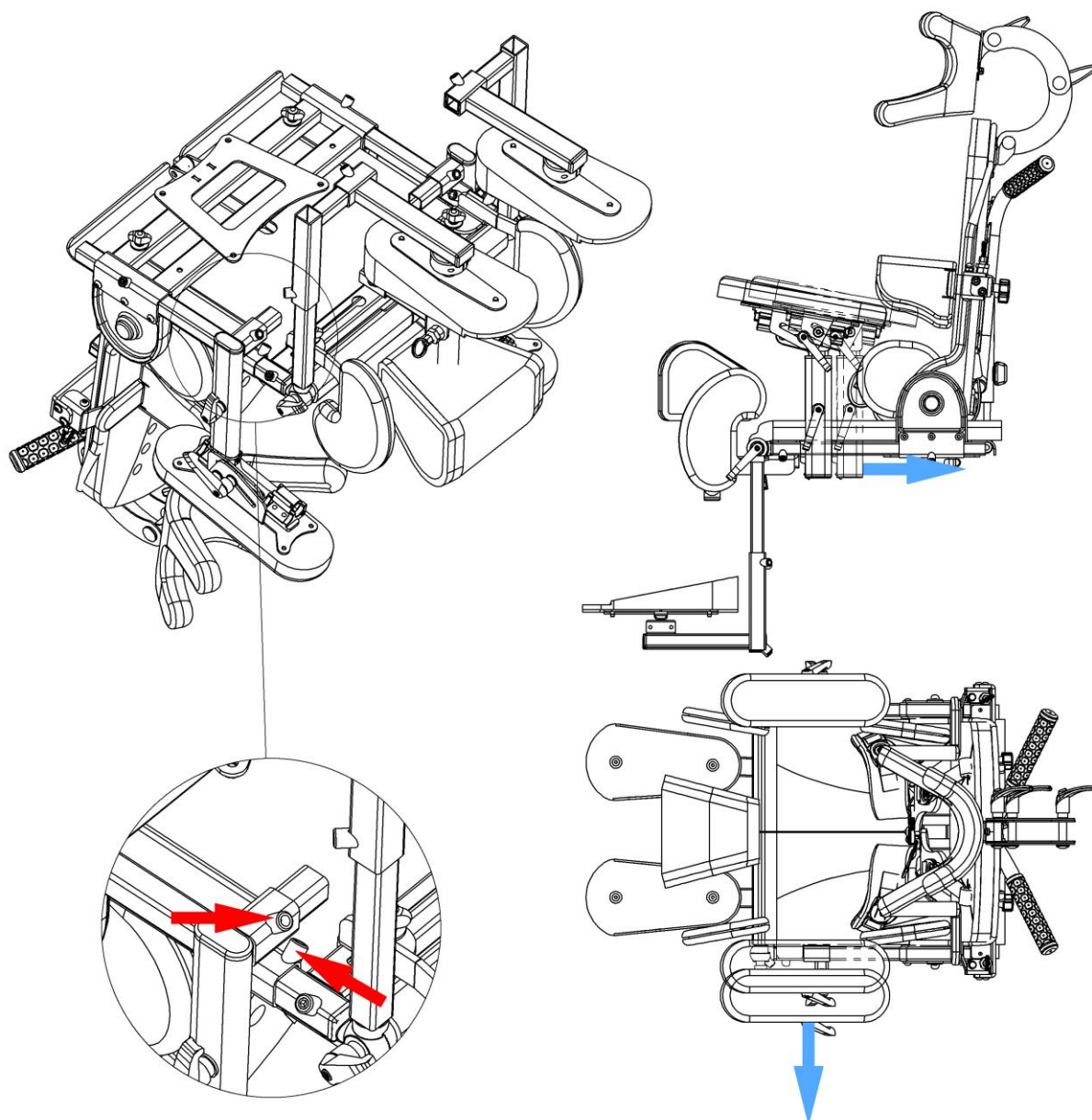


Fig. 27

To adjust the position of the armrest, loosen the screws with a 4mm Allen key marked with the red arrow. Move the armrest in to a convenient position and retighten the screws.

11.17 Description of adjusting height of the armrest

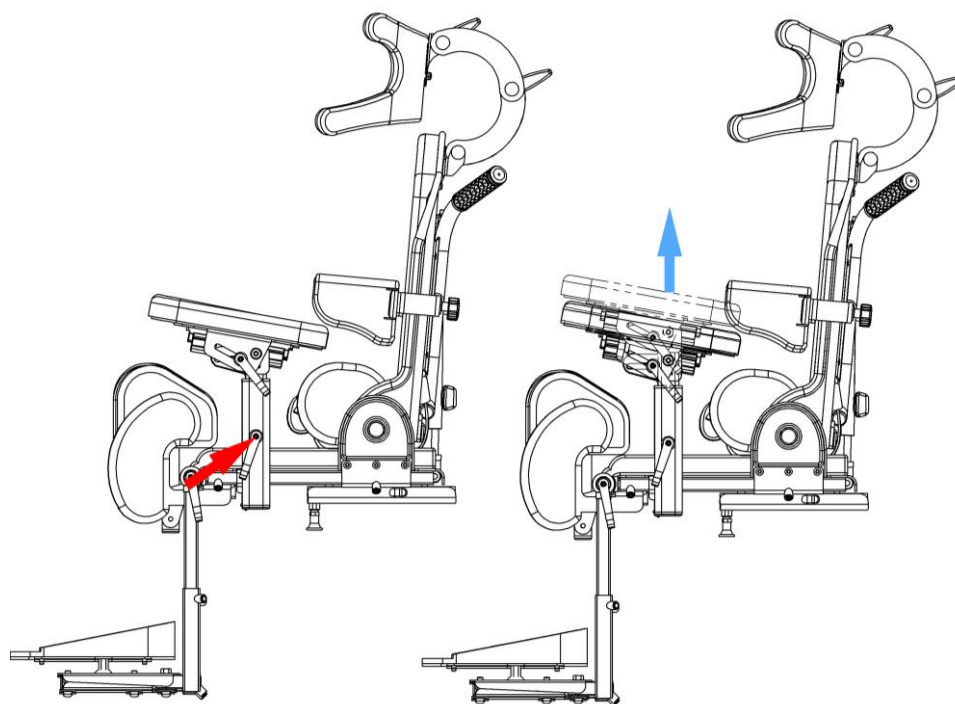


Fig. 28

Loosen the knob marked with the red arrow, next lift the armrest up to the required height. After the adjustment retighten the knob.

11.18 Description of adjusting the angle of the armrest

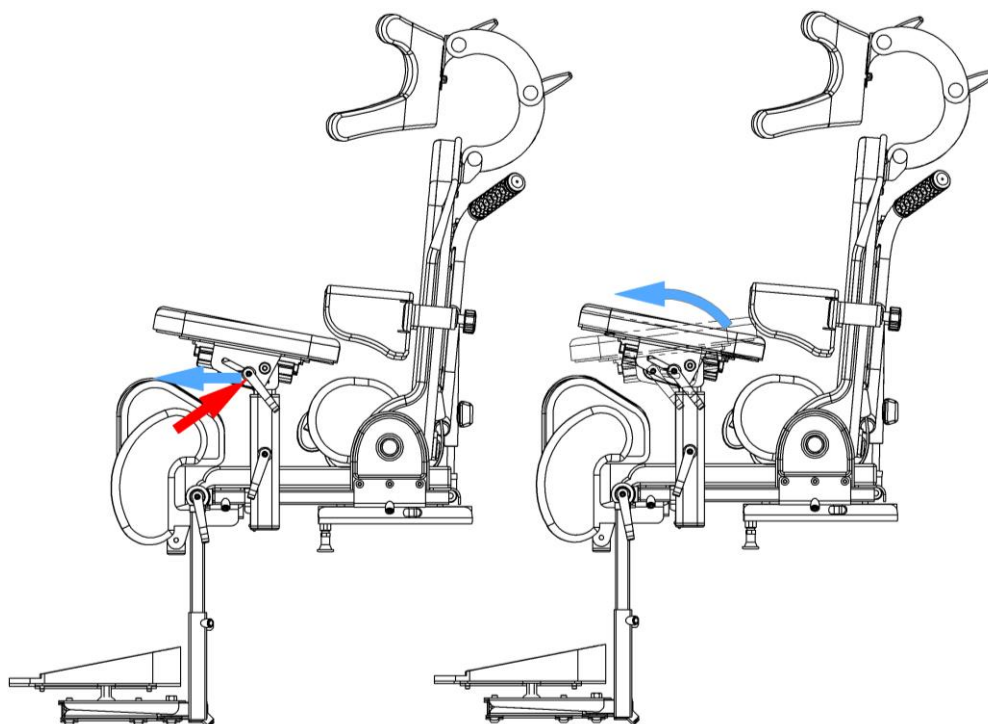


Fig. 29

Loosen knob marked with the red arrow, then turn the knob either right or left, depending on the required armrest angle. After the setup, retighten the lever.

11.19 Description of mounting the pommel

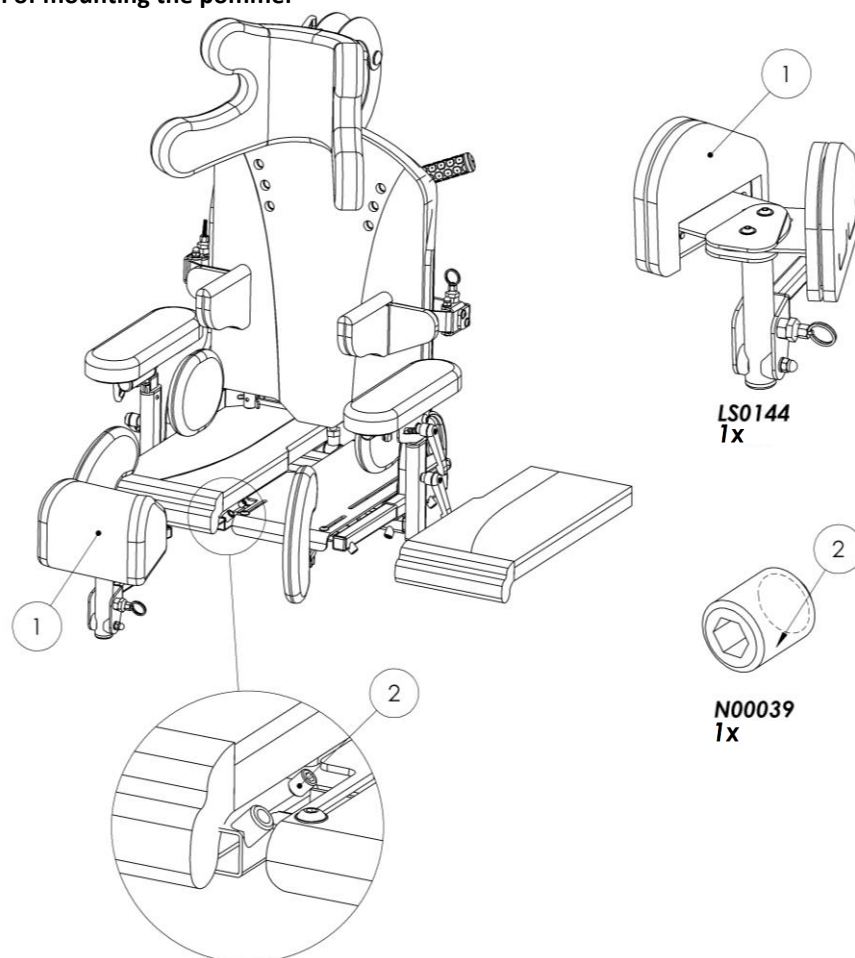


Fig. 30

Remove the left part of the seat cover, insert the pommel in to the slot located under the seat. Next, screw the bolt 2 into the socket such as in Fig. 30 using a 4mm Allen key and put the cover back on.

11.20 Description of a quick swing back pommel

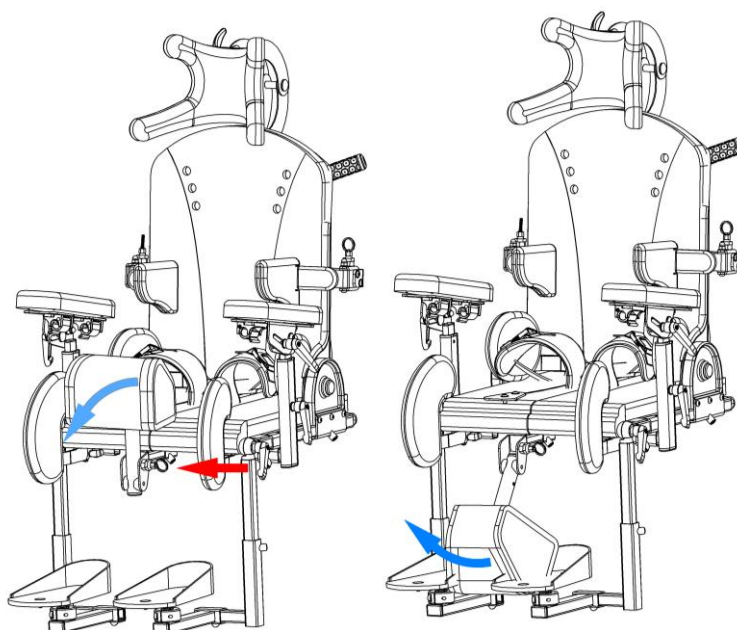


Fig. 31

The pommel has a system of a quick tilt to enable placing a patient in the rehabilitation seat in an easy way. To swing the pommel back, pull the eyelet of the pull ring marked in the picture with the red arrow. To close it back, put the pommel in to the initial position until it clicks in. This means that the pommel is properly fixed.

11.21 Description of adjusting the pommel

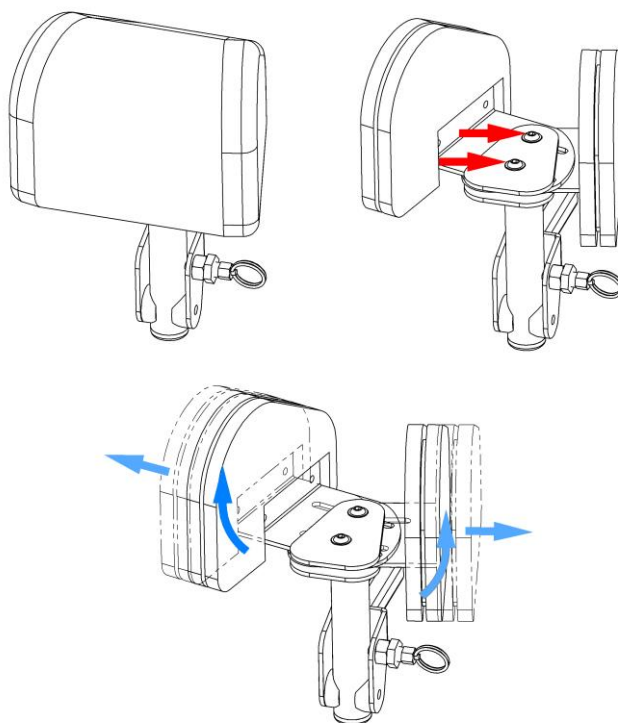


Fig. 32

The pommel can be width and angle adjustable in relations to a patient's legs. To adjust it, remove the pommel cover, loosen up with a 4mm Allen key, adapt the pommel and then retighten all fitting bolts.

11.22 Description of fitting the foot supports

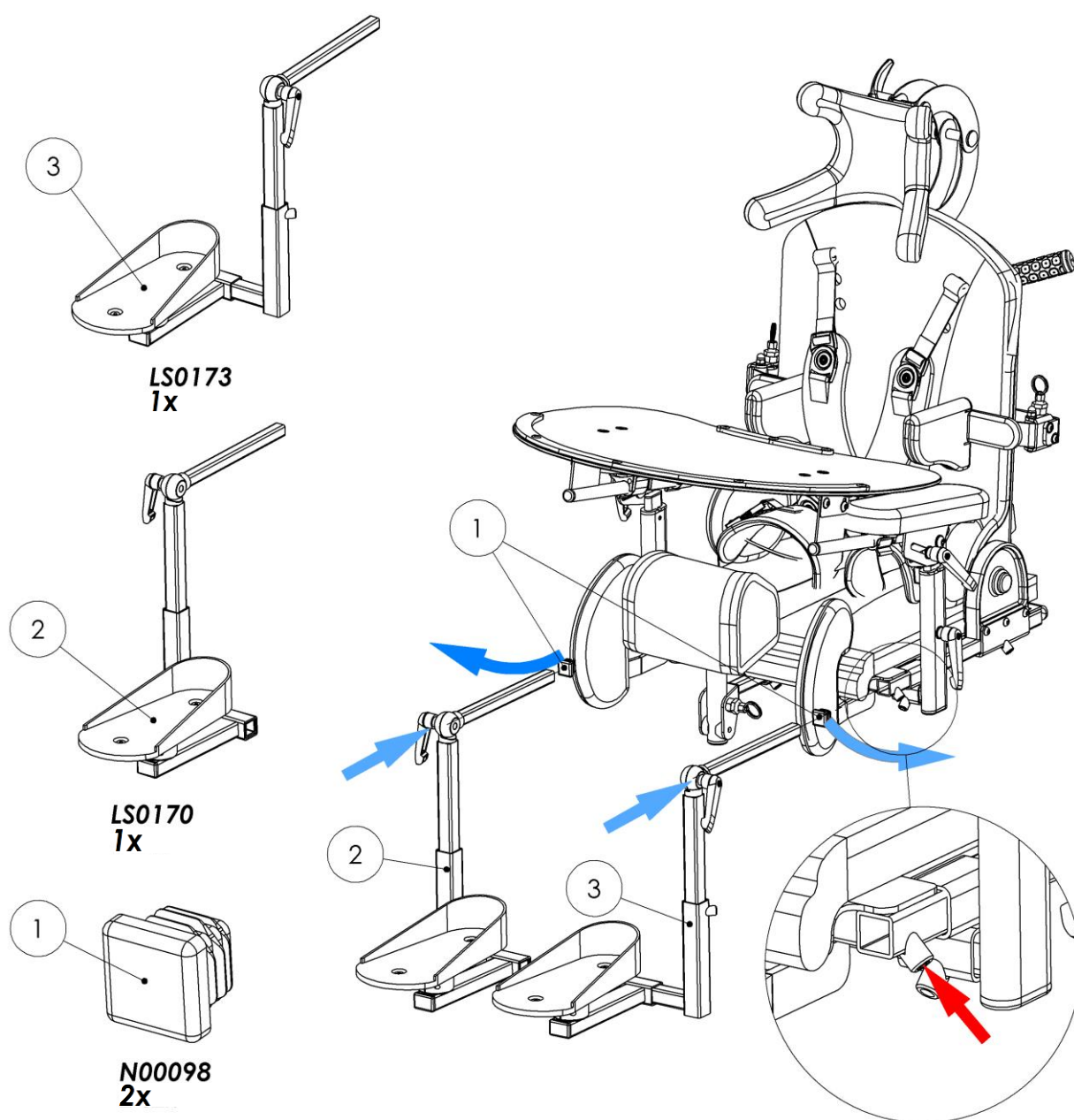


Fig. 33

LiliSIT - orthopaedic seat for children, stabilising the back and head can have parted footrests fitted. To fit the foot supports (2) and (3), remove the end caps from the rods 20mm x 20mm (1), undo the screws marked with the red arrow in such a way that it would allow to insert the foot supports rods in to the mounting slots. After fitting the foot supports in the required position, retighten the mounting screws using a 4mm Allen key.

11.23 Description of adjusting the height of the foot supports

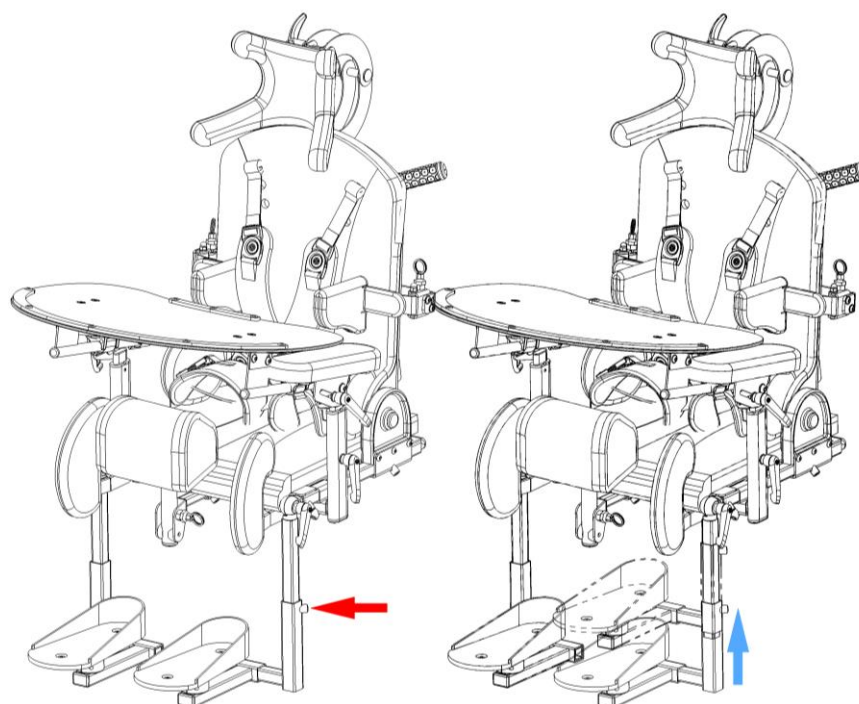


Fig. 34

Loosen bolt marked in Fig. 56 with the red arrow with a 4mm Allen key. Set the required height of the foot supports, finish by retightening the bolt.

11.24 Description of adjusting angle of the foot supports

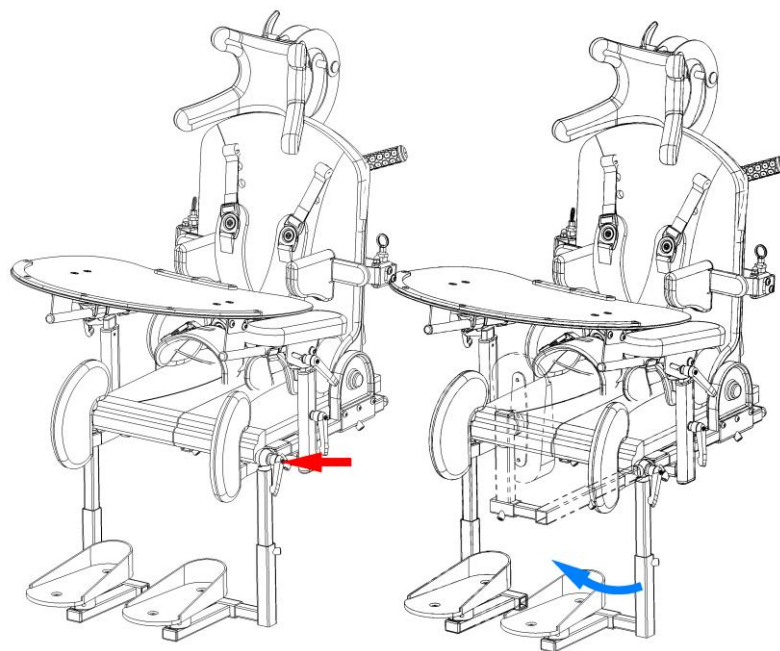


Fig. 35

Loosen knob marked with the arrow. Change the angle of the foot support, then retighten the knob.

11.25 Description of adjusting the distance of the foot supports

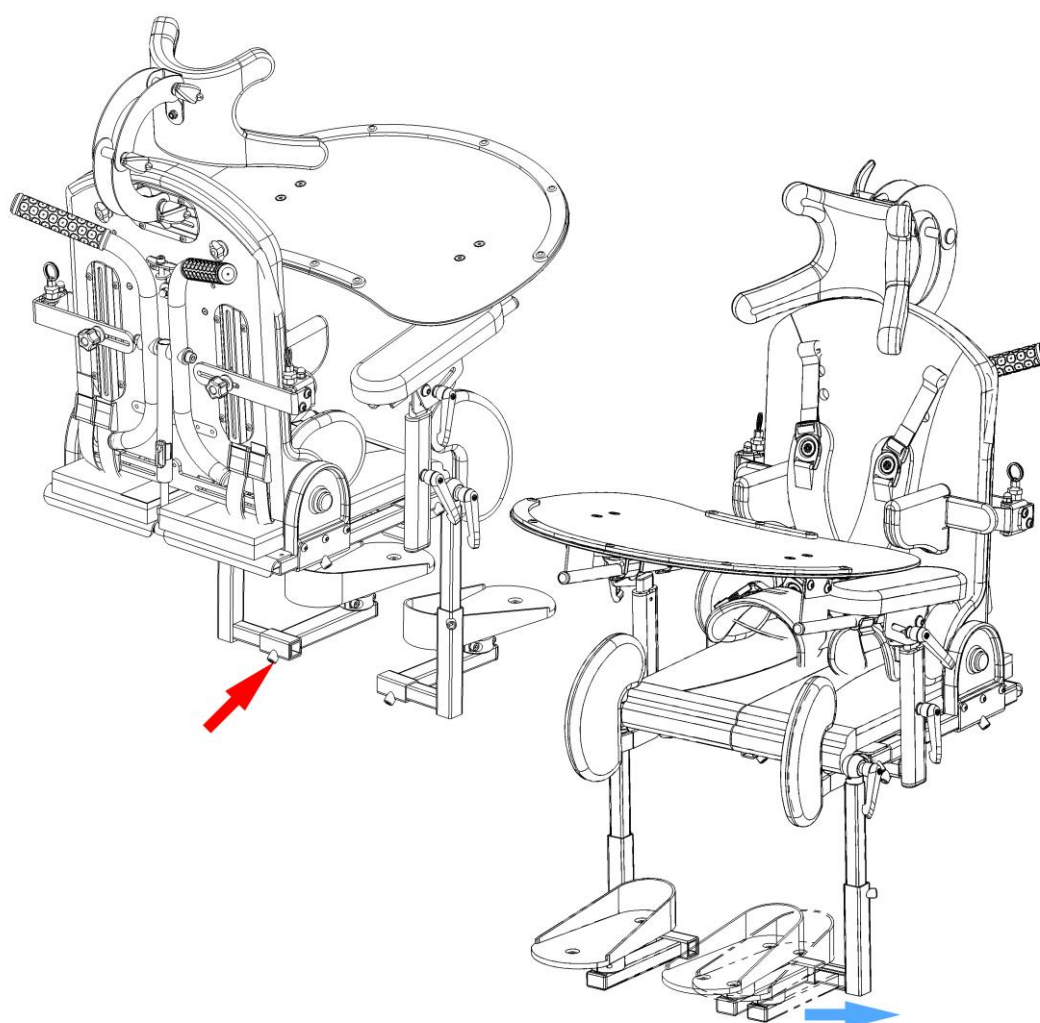


Fig. 36

To adjust the space between the foot supports, loosen screw marked with the red arrow using a 4mm Allen key. Change the distance between the foot supports, next retighten the screws.

11.26 Description of adjusting the angle and position of the platforms

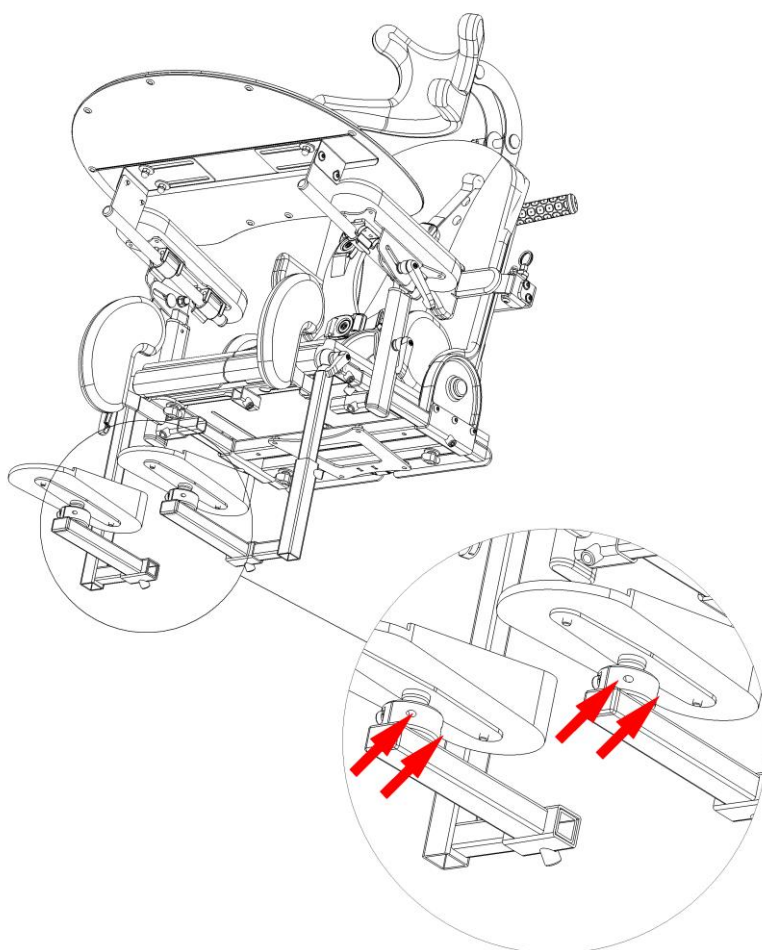


Fig. 37

Loosen both screws marked with the red arrows using a 5mm Allen key.

e

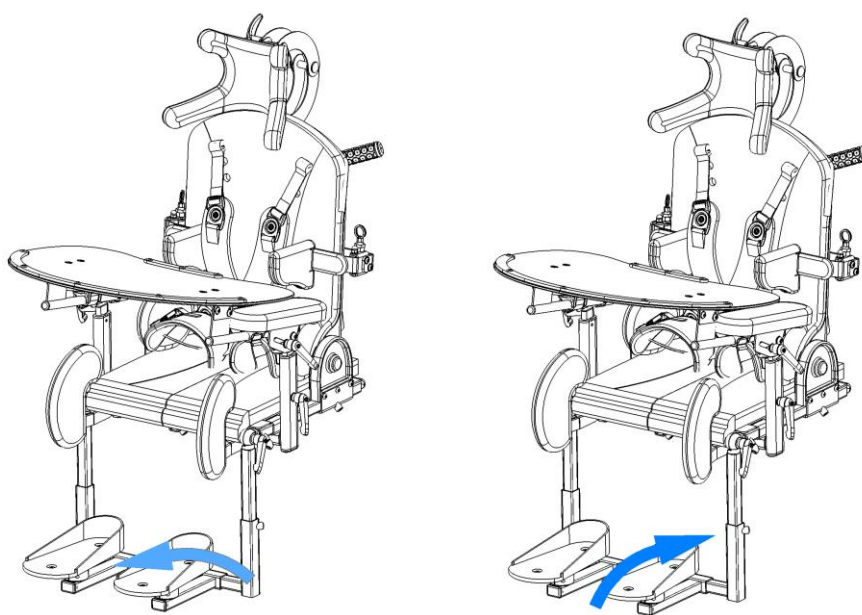


Fig. 38

Adjust the position and the angle of the platforms accordingly. After adjusting retighten the screws.

11.27 Description of mounting knee supports

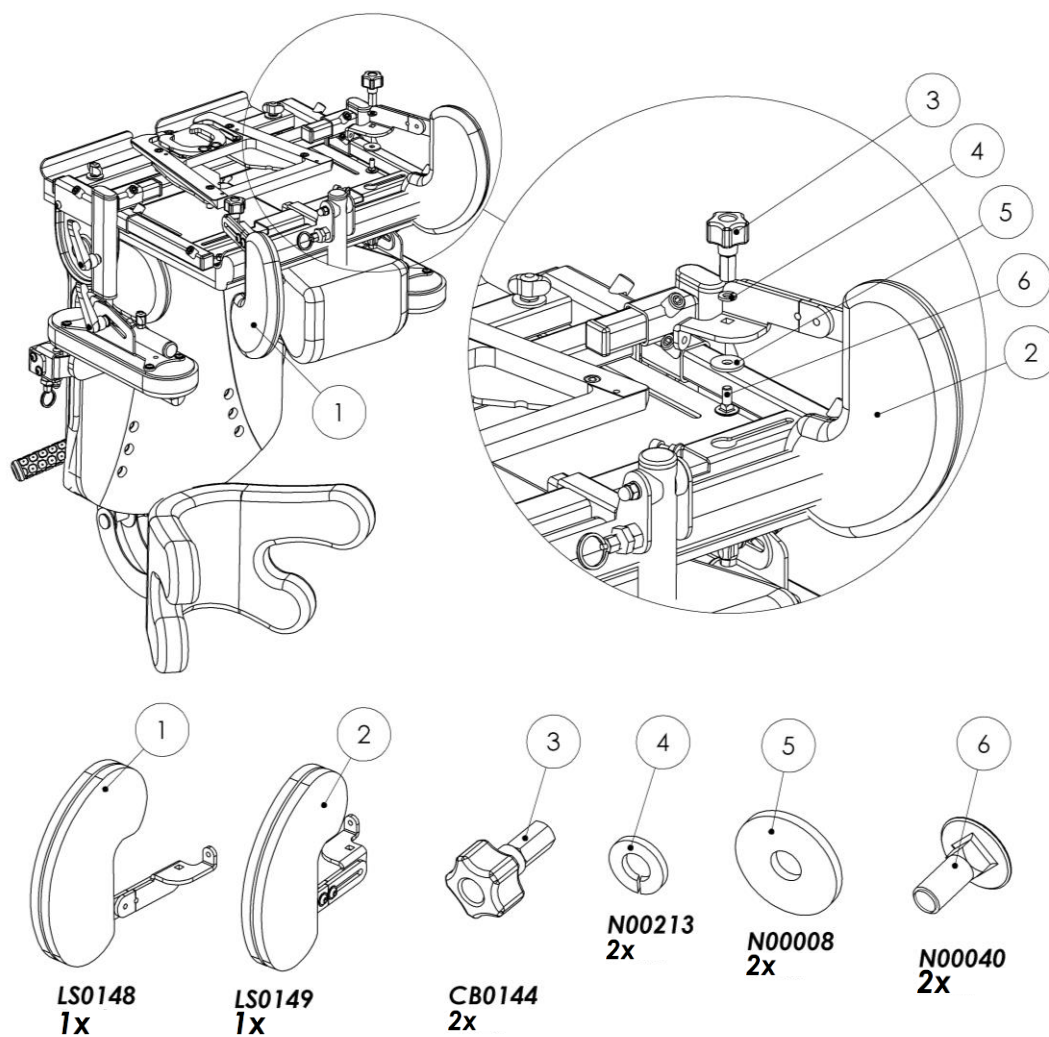


Fig. 39

Combine screw 6 with support 2 and washer 5 with washer 4, tighten with knob 3. This module as shown in Fig. 39 insert into the slot under the seat unit and move to the required position. After putting the parts together, retighten knob 5.

11.28 Description of knee support

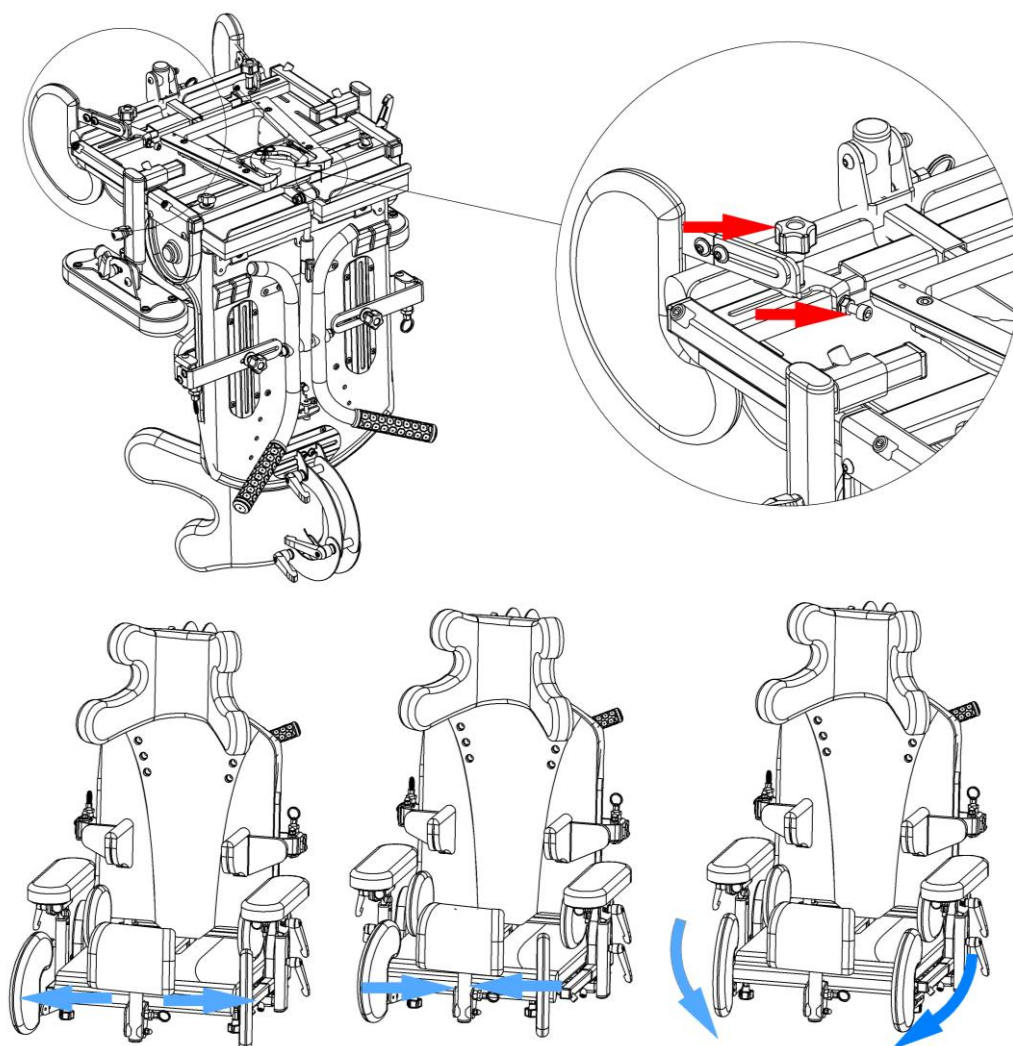


Fig. 40

Loosen the knee support knob under the seat unit. Adjust the width of the knee supports, retighten the knob. To change the angle of the knee supports, loosen the bolt marked with the red arrow and then retighten it or undo the fitting screw. After making the adjustments, tighten the bolt with an open-ended spanner 10mm.

11.29 Description of assembling the rehabilitation tray

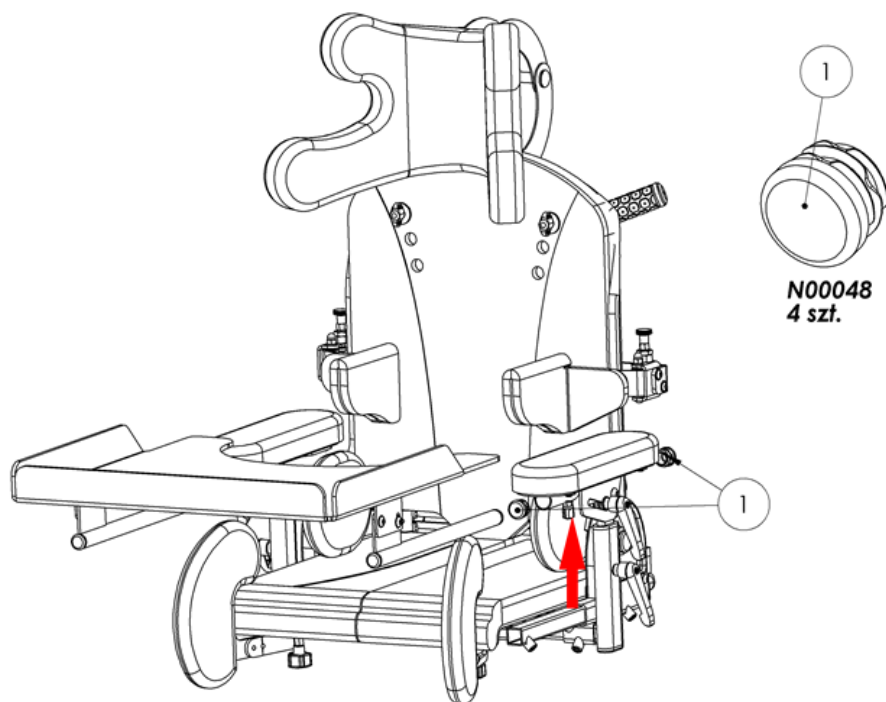


Fig. 41

Insert the rehabilitation tray into the pipes under the armrests. When the required depth is achieved, retighten the knob marked with the red arrow. It is necessary to insert the end caps nr 4 into the pipes after removing the tray.

11.30 Description of adjusting the spacing of the tray handles

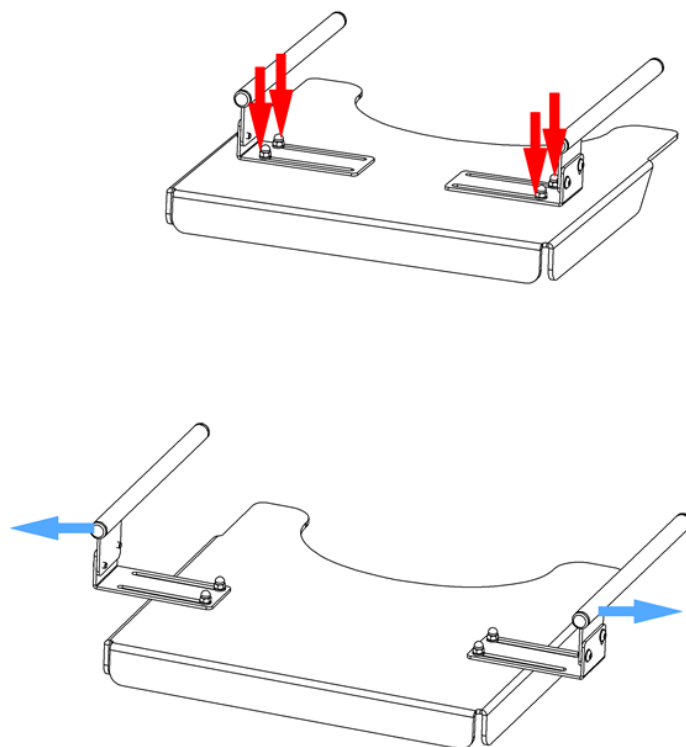


Fig. 42

To adjust the spacing of the tray handles for the sockets located underneath the armrests, loosen the screw caps (Fig. 42) located on the tray handles under the tray top. Next, slide in or slide apart the tray handles, adjusting them to the spacing of the sockets, then tighten the bolts of the tray handles.

11.31 Description of adjusting the tray angle

Adjusting tilt angle of the tray top is done by loosening both screws located above the tray handles, beneath the tray top. After achieving the required tilt angle, retighten the screws (Fig. 43). The screws used for adjusting the top are located on both left and right-hand side of the tray.

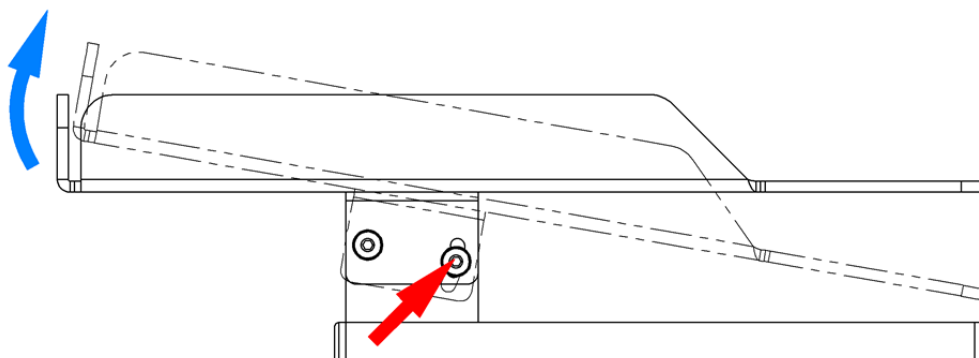


Fig. 43

11.32 Description of adjusting the lumbar support

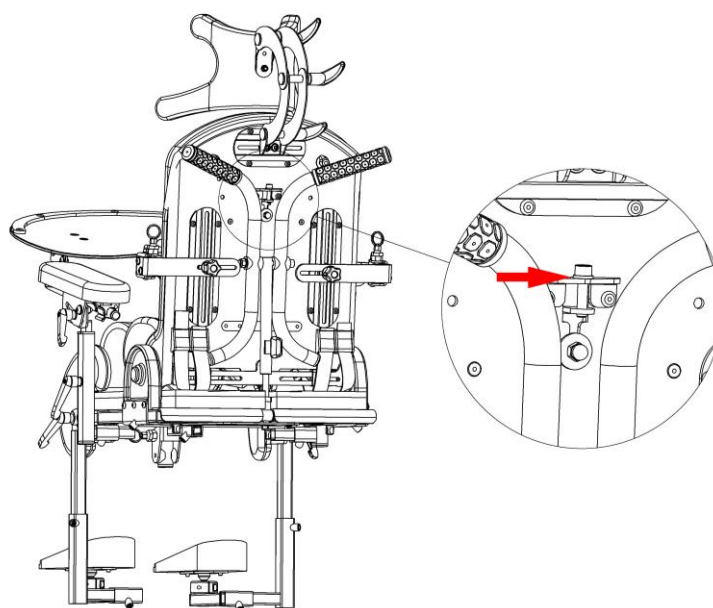


Fig. 44

The lumbar support is adjusted by a screw at the back of the backrest, marked with the red arrow Fig. 44. Tightening the screw changes the shape of the back rest from completely flat profile, as in Fig. 45 (A) to curved profile mapping out the curvatures of the spine Fig. 45 (B).

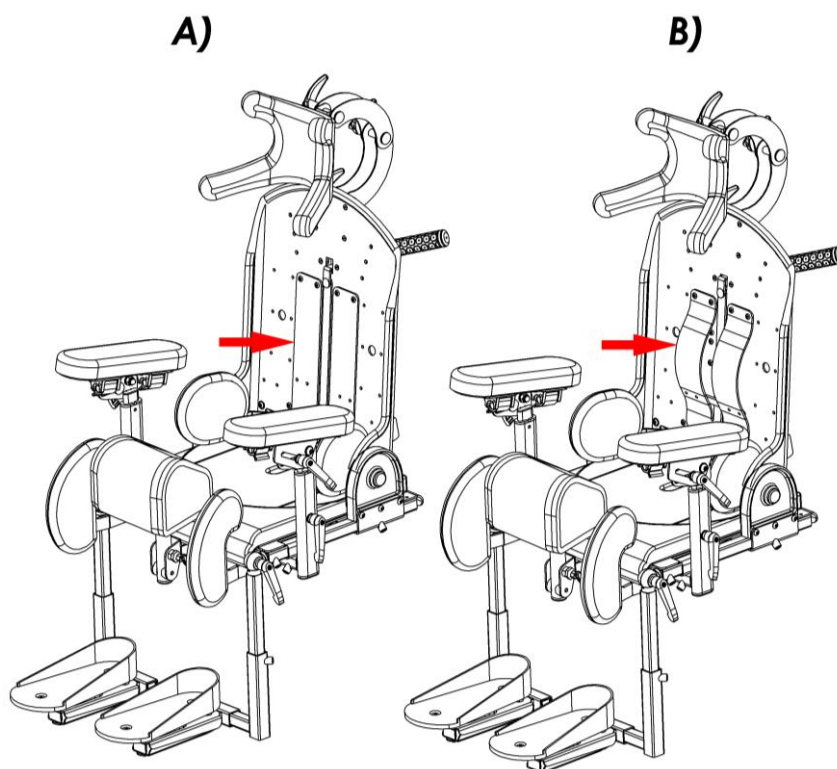


Fig. 45



NOTE! ADJUSTING THE LUMBAR SUPPORT CAN BE ONLY DONE ACCORDING TO AN OCCUPATIONAL THERAPIST, PHYSIOTHERAPIST'S OR DOCTOR'S RECOMMENDATIONS.

12 Moving LiliSIT, orthopaedic seat for children, stabilising the back and head

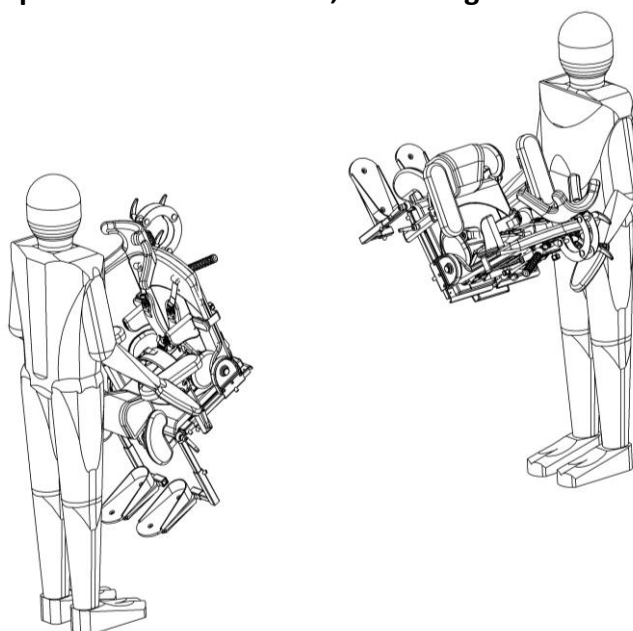


Fig. 46

The orthopaedic seat can be carried by holding it by side supports with both hands or by holding it by the backrest and the seat unit. Example of the correct way of transporting the device shown in Fig. 46.

13 Cleaning and maintenance

LiliSIT - orthopaedic seat for children, stabilising the back and head is a mechanical device with the supporting structure made of steel and aluminium covered with powder coating. There are sponge-foam inserts fixed on to the metal structure. The foam inserts are enclosed with covers made of textile fabrics.

It is important that the equipment is kept clean and regularly maintained in accordance with these instructions.

Cleaning and maintenance recommendation

Paint coatings and plastic covers should be cleaned with a damp cloth. Mild household detergents can also be used.

The upholstery we offer is made of a special breathable fabric. It is produced in accordance with the OEKO-TEX STANDARD100 standards, which confirm complete security of the users, including children. The fabrics used in upholstery covers are free of harmful substances such as: pesticides, chlorophenols, formaldehyde, causing allergy dyes, forbidden azo dyes and extractable heavy metals.

OEKO-TEX STANDARD100 mark is granted for only for fabrics where all components at each manufacturing stage have been tested and obtained positive results.

- Do not wash covers with sponges inside.
- Covers should be either hand washed or in a washing machine at the max temperature of 40C.
- For washing you should use delicate detergents with appropriate attestation in proportions on the packing.
- For children with allergies, use mild soap or special detergents.
- To remove excess water – use short spin cycle, do not wring.
- Drying – hang to dry at room temperature. DO NOT TUMBLE DRY.



NOTE! WHILE WASHING THE UPHOLSTERY COVERS, EXTRA ATTENTION SHOULD BE PAID TO THE VELCRO FASTENERS. TO PREVENT ANY DAMAGE, ENSURE THE VELCRO FASTENERS ARE REMOVED SO THAT THEY DO NOT COME IN TO CONTACT WITH THE UPHOLSTERY.



NOTE! DO NOT WASH WITH THE FOAM INSERTS INSIDE.

Sponge-foam filling:

- vacuum mechanically or by using soft-bristled brush.
- it is acceptable to wash with a damp cloth and a mild detergent; dry thoroughly at room temperature.

Disinfection

In case the device is used by more than one person (i. e. in a rehabilitation centre), disinfectants should be used. For manual disinfection it is advisable to use INCIDIN PLUS in solution 0,25% - 0,5% or similar disinfectant.

Follow instructions given by the manufacturer.

Hint: before the disinfection process, clean both the upholstery and handles.

14 Service and Maintenance

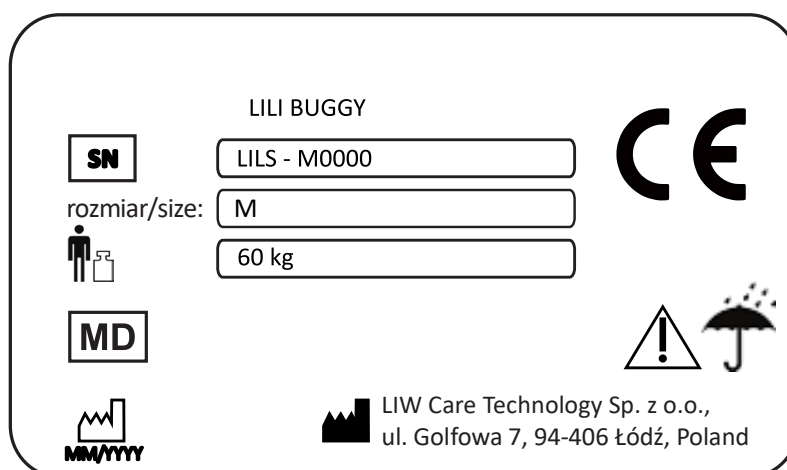
Should you notice faults or defects, stop using the device immediately and contact your dealer or the manufacturer. Defective unit must be protected from further damage. Never attempt to disassemble or repair the product. Do not replace original parts with the ones coming from a source other than the manufacturer recommends.

If the product is no longer used, it needs to be disposed of in accordance with the applicable environmental regulations. The economic lifetime of the product is five years. The manufacturer provides post-warranty service. Contact details:

LIW Care Technology Sp. z o.o., ul. Golfowa 7, 94-406 Łódź, Poland
www.liwcare.pl
email: reklamacje@liwcare.pl

- Current contact details are available on: www.liwcare.pl
- Warranty terms are specified in the warranty card, which is an integral part of this statement. The warranty card is available on the last page of this document.

15 Identification plate



Identification plate is located under the paediatric orthopaedic seat.

WARRANTY CARD

Warranty terms:

1. Manufacturer of medical device - LIW Care Technology Sp. z o.o. (ul. Golfowa 7, 94-406 Łódź, Poland) ensures that the company sells an operative device, free from construction, installation, material defects, etc., and that the device will remain free from such defects during the warranty period. This warranty does not cover functionality of the product for the Buyer purposes.
2. LIW Care Technology Sp. z o.o. (the manufacturer) grants a two-year warranty for the equipment, starting from the initial purchase date.
3. The only proof of warranty is this warranty card, issued by the Seller to the Buyer. To transfer the warranty entitlements, you need to transfer the possession of this warranty card.
4. In case of finding any faults or defects during the warranty period - the manufacturer will remedy the defect at his own cost. If parts are replaced, the removed part shall become the property of the LIW Care Technology Sp. z o.o. and shall not be returned to the warranty user.
5. Under the warranty, the user is obliged to report physical product defect during the warranty period via a form on our website: www.liwcare.pl and logging on to the "customer zone", by sending the form in the post to LIW Care Technology Sp. z o.o. or by phone: +48 42 212-35-18
6. Under the warranty, the user is obliged to deliver the equipment with the warranty card and along with the original document of purchase (VAT invoice or receipt) at the expense of the manufacturer to his seat. when there is no receipt, the initial purchase date (the start of the warranty period) shall be the date of delivery.
7. The device sent to the service, should go with the clean upholstery, or, in the event of impossibility of washing it, the upholstery should be taken off. In the event of receiving dirty unit to the service, producer has the right to refuse carry out repairs.
8. This warranty does not cover:
 - waste elements and destroyed or damaged parts due to improper use (in particular, but not exclusively due to improper instructions issued or under unfavorable conditions), or improper storage of the product,
 - damage caused by any alterations or additions to the device made by the user or a third parties,
 - damage caused by improper cleaning or maintenance of the product made by the user or a third party,
 - damage caused by normal wear and tear or normal aging of the product,
 - damage caused by user's lack of negligence (particularly, but not exclusively, in maintenance and cleaning of the product),
 - damage caused by force majeure,
 - damage caused by external events (pollutions, mechanical and water damage).
9. The warranty does not include does not include regulation and adjustment during the warranty period, because they do not constitute a product defect.
10. In order to qualify for the above warranty, you need to deliver the product which is securely enclosed in packaging to the manufacturer. To do that, use the original packaging. If the user do not deliver the product in the original packaging, his replacement packaging must satisfy the following requirements: solid box with intact walls, separate protection for each component, cushioning material, strong tape used for wrapping, as well as sender address or receiver (LIW Care Technology Sp. z o.o.) address.
- LIW Care Technology Sp. z o.o. shall not be held liable for product damage caused by insufficient packaging.
11. Warranty Repair or replacement will be made as far as possible within 30 days from the proper delivery of the product by the warranty user to LIW Care Technology Sp. z o.o.
12. After warranty repair, the product will be delivered at the expense of LIW Care Technology Sp. z o.o., to the supplied address. In the event when a correctly addressed package is not collected, the warranty user is obliged to shall bear all costs related to the product transport and its storage.
13. Quality warranty granted by LIW Care Technology Sp. z o.o. does not affect any legal rights of the Buyer.

Thank you for choosing our product. We wish you success in therapy with our equipment.

NOTE!

KEEP THE WARRANTY CARD IN A SAFE PLACE

LIW Care Technology Sp. z o.o. will require providing this document before accepting the warranty repair.

Product name/TypeSerial number:.....

Sold-by date:.....

Stamp and signature of the Seller:

No.	Date of repair request	Procedures	Repair completion date	Stamp and signature of the technician
1				
2				
3				